

DEPARTMENT OF THE ARMY TECHNICAL MANUAL

ORGANIZATIONAL AND FIELD (THIRD ECHELON)

MAINTENANCE REPAIR PARTS AND SPECIAL TOOL LISTS

TENT, FRAME TYPE, SECTIONAL, M-1948
(FSN 8340-262-2399)

This copy is a reprint which includes current
pages from Changes 1 and 2.

HEADQUARTERS, DEPARTMENT OF THE ARMY
MARCH 1964

Change }
No. 2 }

HEADQUARTERS
DEPARTMENT OF THE ARMY
Washington, D. C., 31 August 1970

**Organizational and DS Maintenance Repair Parts
and Special Tools List
TENT, FRAME TYPE; SECTIONAL, ALL WEATHER HOUSING;
WITH DOOR AND WINDOW ASSEMBLIES; WOOD FLOOR,
DIMENSIONS 16 FT LONG, 16 FT WIDE (MODEL M-1948)
FSN 8340-262-2399**

Current a of 12 January 1970

TM 10-8340-210-23P, 19 March 1964, is changed as follows:

Page V, paragraph 4 is superseded as follows:

4. Recommendations for Maintenance Publication Improvements

The reporting of errors, omissions, and recommendations for improving this publication by the individual user is encouraged. Reports should be submitted on DA Form 2028 (Recommended Changes to Publications) and forwarded direct to Commanding

General, U. S. Army Mobility Equipment Command, ATTN: AMSME-MPP, 4300 Goodfellow Boulevard, St. Louis, Missouri 63120.

Page 5, Section II Group 5401; Line 3; FSN 8340-183-4166, change source code from P1 to X2. Delete column i, j, & k.

Page 20, Figure 7 rescinded.

Page 21, Section III, Special Tool List, delete in its entirety.

By Order of the Secretary of the Army:

Official:

KENNETH G. WICKHAM,
Major General United States Army,
The Adjutant General

W. C. WESTMORELAND,
General United States Army,
Chief of Staff

Distribution:

To be distributed in accordance with DA Form 12-25, Section I, (Qty rqr block No. 278 organizational maintenance requirements for Tents.

This publication has been printed by the UNITED STATES ARMY PUBLICATIONS DISTRIBUTION CENTER, ST. LOUIS, MISSOURI, to meet your needs on a timely basis.

CHANGE }
No. 1 }

HEADQUARTERS
DEPARTMENT OF THE ARMY
WASHINGTON, D. C., 4 March 1969

**Organizational and Direct Support
Maintenance Repair Parts and Special Tool Lists**

**TENT, FRAME TYPE; SECTIONAL, ALL WEATHER HOUSING;
W/DOOR AND WINDOW ASSEMBLIES; WOOD FLOOR, DIM.,
16 ft. LG., 16 ft. W (MODEL M-1948)
FSN 8340-262-2399**

Current as of 31 July 1968

TM 10-8340-210-23P, 19 March 1964, is changed as follows:

The title of the manual is changed as shown above.

Page ii. Paragraph 2a(2)(b.1) is added as follows:

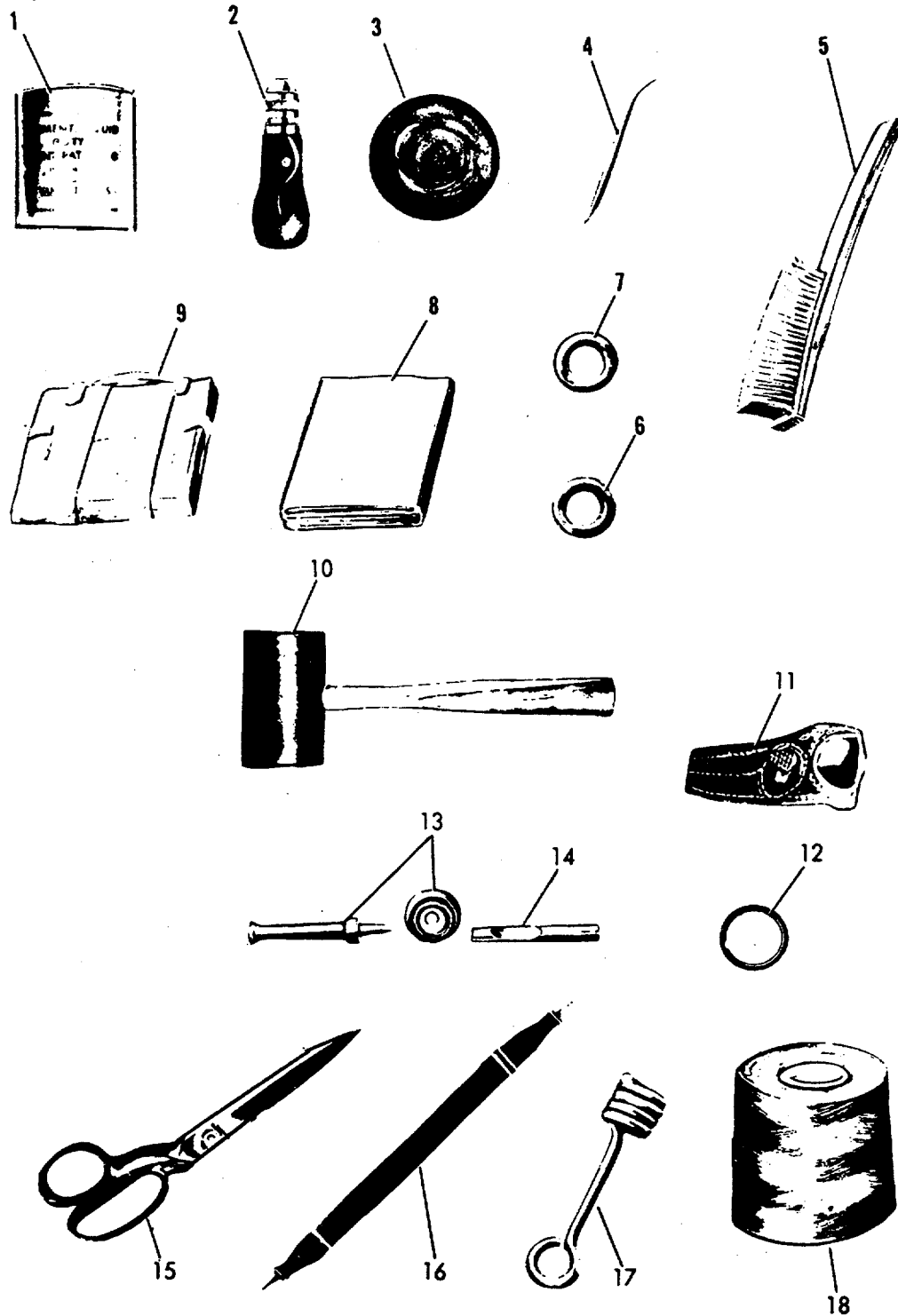
(b.1) P2- Repair parts which are procured and stocked for insurance purposes because the combat or military essentially of the end item dictates that a minimum quantity be available in the supply system.

Page v. Paragraph 4 is superseded as follows:

4. Report of Equipment Manual Improvements

Report of errors, omissions and recommendations for improving this manual by the individual user is encouraged. Reports should be submitted on DA Form 2028 (Recommended Changes to DA Publications) and forwarded direct to Commanding General, U. S. Army Mobility Equipment Command, ATTN: AMSME-MPP, 4300 Goodfellow Boulevard, St. Louis, Mo. 63120.

Page 20. Figure 7 is superseded as follows:



ME 8340-210-23P/7 C1

- 1 Adhesive
- 2 Saddler's sewing awl
- 3 Technical beeswax
- 4 Sail makers needle
- 5 Wire scratch brush
- 6 Metallic grommet
- 7 Metallic grommet
- 8 Cotton duck cloth
- 9 Tentage repair case

- 10 Rawhide mallet
- 11 Sewing palm
- 12 Round connecting ring
- 13 Punch and die
- 14 Cutting punch
- 15 Bent trimmers shears
- 16 Carrying bag and case sling
- 17 Tent line slip
- 18 Polyester thread

Figure 7. Tentage repair kit

SECTION II. REPAIR PARTS LIST

Page	Line	Action	Source codes				Federal stock number	Description	Unit of issue	Quantity incorporated in unit	15-Day maintenance allowance			Illustrations				
			Materiel	Source	Echelon	Recovery					1-10	11-25	100	Figure No.	Item No.			
																2 nd	Ech.	3 rd
																Ech.	Ech.	Ech.
a	b	c	d	e	f	g	h	i	j	k	l	m						
2	5	Ch col b. Delete col e, add Code and P/N to col f, delete (CA) from col f, delete col i, j, k.		X2	F		GROUP 54- TENTAGE 5401 - TENT BODY CHANNEL: locking, vestibule side and door panel DWG5-4-184 (81337).	ea	4									
4	1	Ch col b, delete col e, add code and P/N to col f and delete (CA.) delete col k.		X2	F		CLIP, B, tent pin footstop, steel DWG5-4-185 (81337).	ea	4									
	4	Ch col b, add code and P/N to col f, delete (CA) col f.		P2	O	8340-182-6262	CLIP, purlin, steel DWG5-4-183 (81337).	ea	2									
	6	Ch col b, dele col e, add code and P/N col f, dele (CA) col f, dele col i, j, k.		X2	O		CONNECTOR: adjustable, door frame DWG5-4-184 (81337).	ea	4									
	20	Ch col b, dele col e, add code and P/N col f, dele (CA) col f, dele col i, j, k.		X2	O		KEEPER, TRANSOM *** DWG5-4-185 (81337).	ea	2									
	23	Ch col b, add code and P/N col f, dele (CA) col f.		P2	O	8340-182-9315	PLATE: Stovepipe opening DWG5-4-185 (81337).	ea	2									
5	1	Ch col b, add code and P/N col f, dele (CA) col f.		P2	O	8340-183-4165	STRAP: Hinged, transom latching, steel DMG5-4-185 (81337).	ea	2									
6	11	Ch col e		P	O	8340-252-2305	LINE, TENT ***	ea	8									
	15	Ch col e		P	O	8340-252-2305	LINE, TENT	ea	8									
7	7	Ch col e		P	O	8340-252-2305	LINE, TENT ***	ea	1									
	10	Ch col b, add code and P/N col f, dele (CA) col f.		P2	O	8340-182-6262	CLIP; purlin steel DWG5-4-183 (81337)	ea	1									
	12	Ch col b, add code and P/N col f, dele (CA) col f.		P2	F	8340-377-6601	GUSSET, TENT VESTIBULE DWG5-4-187 (81337).	ea	2									
	14	Ch col b, dele col e, add code and P/N col f, dele (CA) col f, dele col i, j, k.		X2	O		STRIP: Binding, vestibule end cover, steel DWG5-4-183 (81337).	ea	1									
9	3	Ch col e		P	O	8340-252-2305	LINE, TENT ***	ea	1									

Page	Line	Action	Source codes				Federal stock number	Description	Unit of issue	Quantity incorporated in unit	15-Day maintenance allowance			Illustrations					
			M a t e r i e l	S o u r c e	E c h e l o n	R e c o i l v e i r t - y					1-10	11-25	100	Figure No.	Item No.				
																2 nd	Ech.	3 rd	Ech.
																a	b	c	d
9	4	Ch col b, dele col e, add code and P/N col f, dele (CA) col f, dele col i, j, k.		X2	O		5403 - TENT SUPPORT COMPONENTS CHAIN: Leaf connector pin, safety DWG5-4-183 (81337).	ea	20										
	7	Ch col b, add code and P/N col f, dele (CA) col f.		P2	F	8340-182-2003	CLIP: arch, steel DWG5-4-183 (81337).	ea	10										
	9	Ch col b, dele col e		X2	F		CLIP; A, tent pin, footstop, steel	ea	10										
	11	Ch col b, add code and P/N col f, dele (CA) col f.		P2	F	8340-182-6262	CLIP: Purlin, steel DWG5-4-183 (81337).	ea	90										
	13	Ch col b, dele col e, add code and P/N to col f, dele (CA) col f, dele col i, j, k.		X2	O		COLLAR: Lacing ferrule, steel DWG5-4-183 (81337).	ea	20										
10	1	Ch col b, dele col e, add code and P/N col f, dele (CA) col f, dele col k.		X2	F		FERRULE, TENT ARCH FRAME SECTION*** DWG5-4-183 (81337).	ea	10										
	2	Ch col b, dele col e, add code and P/N col f, dele (CA) col f, dele col k.		X2	F		FERRULE, TENT ARCH FRAME SECTION *** DWG5-4-183 (81337).	ea	10										
	4	Ch col b, dele col e, add code and P/N col f, dele (CA) col f, dele col i, j, k.		X2	F		FERRULE, TENT ARCH FRAME SECTION ***	ea	20										
	6	Ch col b, add code and P/N col f, dele (CA) col f.		P2	F	8340-182-9306	LEAF: connector A, steel DWG5-4-183 (81337).	ea	20										
	7	Ch col b, add code and P/N col f, dele (CA) col f.		P2	F	8340-182-9310	LEAF: Connector B, steel DWG5-4-183 (81337).	ea	20										
	21	Ch col b, dele col e, add code and P/N col f, dele (CA) col f, dele col i, j, k.		X2	O		CHAIN: floor unit locking hook DWG5-4-182 (81337).	ea	8										
	23	Ch col b, dele col e, add code and P/N col f, dele (CA) col f, dele col i, j, k.		X2	O		CORNER SUPPORT: floor DWG5-4-182 (81337).	ea	16										

Page	Line	Action	Source codes				Federal stock number	Description	Unit of issue	Quantity incorporated in unit	15-Day maintenance allowance			Illustrations	
			Material	Source	Echelon	Recovery					No. of equipments			Figure No.	Item No.
											1-10	11-25	100		
											2 nd Ech.	3 rd Ech.			
a	b	c	d	e	f	g	h	i	j	k	l	m			
11	5	Ch col b, dele col e, i, j, and k.		X2	O			HOOK, TENT w/chain and cotter pin, locking, floor unit DWG5-4-182 (81337).	ea	8					
	11	Ch col b, dele col e, add code and P/N col f, dele (CA) col f, dele col i, j, k.		X2	O			SOCKET: door post, S DWG5-4-182 (81337).	ea	16					
	12	Ch col b, dele col e, add code and P/N col f, dele (CA) col f, dele col i, j, k.		X2	O			SOCKET: locking, floor unit, S DWG5-4-182 (81337).	ea	16					
	17	Ch col b, dele col e, add code and P/N col f, dele (CA) col f, dele col k.		X2	F			ANGLE: steel, panel and door DWG5-4-187 (81337).	ea	1					
13	1	Ch col b, dele col e, add code and P/N col f, dele (CA) col f, dele col k.		X2	F			CLIP: vestibule panel and door purlin DWG5-4-187 (81337).	ea	1					
	3	Ch col b, add code and P/N col f, dele (CA) col f.		P2	F	8340-182-7415		CONNECTOR: gusset, w/bolts and wing nuts DWG5-4-187 (81337).	ea	1					
	15	Ch col b, dele col e, add code and P/N col f, dele (CA) col f, dele col i, j, k.		X2	O			CONNECTOR: adjustable, S DWG5-4-188 (81337).	ea	4					
	18	Ch col b, dele col e, add code and P/N col f, dele (CA) col f, dele col k.		X2	F			CONNECTOR: fixed, S DWG5-4-184 (81337).	ea	4					
	23	Ch col b, add code and P/N col f, dele (CA) col f, dele col k.		P2	F	8340-182-0441		ANGLE: purlin, S DWG5-4-183 (81337).	ea	76					
	26	Ch col b, dele col e, add code and P/N col f, dele (CA) col f, dele col k.		X2	F			ANGLE: side panel S DWG5-4-187 (81337).	ea	1					
15	1	Ch col b, dele col e, add code and P/N col f, dele (CA) col f, dele col i, j, k.		X2	O			ANGLE: tie, side panel and door assembly DWG5-4-187 (81337).	ea	1					

Page	Line	Action	Source codes				Federal stock number	Description	Unit of issue	Quantity incorporated in unit	15-Day maintenance allowance			Illustrations				
			M a t e r i e l	S o u r c e	E c h e l o n	R e c o i l e i r t - y					1-10	11-25	100	Figure No.	Item No.			
																No. of equipments		
																2 nd Ech.	3 rd Ech.	
a	b	c	d	e	f	g	h	i	j	k	l	m						
	7	Ch col b, dele cot e, add code and P/N col f, dele (CA) col f, dele col k.		X2	F		CLIP: vestibule side panel purlin DWG5-4-187 (81337).	ea	1									
	8	Ch col b, add code and P/N col f, dele (CA) col f, dele col k.		P2	F	8340-182-7415	CONNECTOR: gusset, w/bolts and wing nuts DWG5-4-187 (81337). 5404- TENT ANCHORING COMPONENTS	ea	1									
17	4	Ch col e MIL Spec P-501 (CA).		P	O	8340-823-7451	PIN, TENT: steel 12 in. lg, type II 5405 TENT ACCESSORIES	ea	24									
	4	Ch col b, dele col e, add code and P/N col f, dele (CA) col f, dele col k.		X2	F		BRACKET: switch S DWG5-4-296 (81337).	ea	1									
	9	Ch col b, dele col e, add code and P/N col f, dele (CA) col f, dele col i, j, k.		X2	O		CLIP: cord, S DWG5-4-296 (81337).	ea	1									
	11	Ch col-b, dele col e, add code and P/N col f, dele (CA) col f, dele col i, j, k.		X2	O		HANGER: cord, spring steel DWG5-4-296 (81337).	ea	7									
	12	Ch col b, add code and P/N col f, dele (CA) col f, dele col k.		X2	F		HANGER: outlet, spring steel DWG5-4-296 (81337).	ea	4									

SECTION III. SPECIAL TOOLS LIST

Source codes				Federal stock number	Description	Unit of issue	Qty inc. in unit	15-Day maintenance allowance			Illustrations	
Materiel	Sourcel	Echelon	Receivert-y					No. of equipments			Figure No.	Item No.
								1-10	11-25	100		
								a	b	c	d	e
	P	O		5120-540-3120	KEY, SOCKET HEAD SCREW: hex type 5/16 in. by 6 in by 6 in. (CD) <i>Note.</i> One each of the following item may be requisitioned if not previously authorized for use with other equipment or by applicable TO&E.	ea	9	*	*	2		
	P	O		8340-262-5767	REPAIR KIT, TENTAGE (CA)	ea	1	*	*	2		
	P	O		8040-266-0850	ADHESIVE, 1 pt can	cn	6	*	*	*	7	1
	P	O		5120-257-5541	AWL, SADDLER'S SEWING (CD)	ea	1	*	*	*	7	2
	P	O		9160-253-1173	BEESWAX, TECHNICAL (CD)	ck	1	*	*	*	7	3
	P	O		7920-291-5815	BRUSH, WIRE, SCRATCH (CD)	ea	1	*	*	*	7	5
	P	O		8340-270-1334	CASE, TENTAGE REPAIR KIT (CA)	ea	1	*	*	*	7	9
	P	O		8305-926-6171	CLOTH, DUCK COTTON (CA)	yd	8	*	*	*	7	8
	P	O		6325-231-6622	GROMMET, METALLIC	gr	1	*	*	*	7	6
	P	O		5325-202-2053	GROMMET, METALLIC	hd	1	*	*	*	7	7
	P	O		5120-222-2220	MALLET, RAWHIDE	ea	1	*	*	*	7	10
	P	O		8315-163-1547	NEEDLE, SAIL MAKERS SIZE 14	pk	1	*	*	*	7	4
	P	O		5120-223-6838	PALM, SEWING (CD)	ea	1	*	*	*	7	11
	P	O		5120-221-1150	PUNCH AND DIE (CD)	ea	1	*	*	*	7	13
	P	O		5120-221-1151	PUNCH AND DIE (CD)	ea	1	*	*	*		
	P	O		5110-280-0923	PUNCH, CUTTING (CD)	ea	1	*	*	*	7	14
	P	O		5110-180-0924	PUNCH, CUTTING (CD)	ea	1	*	*	*		
	P	O		6340-264-1221	RING, CONNECTING, ROUND: 1/2 in. id	ea	50	*	*	*	7	12
	P	O		5340-264-1222	RING, CONNECTING, ROUND: 3/4 in. id	ea	25	*	*	*		
	P	O		5340-264-1219	RING, CONNECTING, ROUND: 1 in. id	ea	10	*	*	*		
	P	O		5110-596-9703	SHEARS, BENT TRIMMERS (CD)	pr	1	*	*	*	7	15
	P	O		8465-269-0682	SLING, CARRYING BAG AND CASE	ea	1	*	*	*	7	16
	P	O		8340-205-2759	SLIP, TENT LINE (CA)	ea	10	*	*	*	7	17
	P	O			TECHNICAL MANUAL, TM 10-269, GENERAL REPAIR FOR CANVAS AND WEBBING	ea	1	*	*	*		
	P	O		8310-988-1301	THREAD, POLYESTER (CA)	tu	1	*	*	*	7	18
	P	O		4020-233-5980	TWINE, CARTON, WRAPPING, 5 PLY MRT	lb	1	*	*	*		
					<i>Note.</i> Above components are available separately for replacement through normal supply channels.							

By Order of the Secretary of the Army:

Official:

KENNETH G. WICKHAM,
*Major General, United States Army,
The Adjutant General.*

W. C. WESTMORELAND,
*General, United States Army,
Chief of Staff.*

Distribution:

To be distributed in accordance with DA Form 12-2 Sec. I (qty. rqr Block #278), Organizational maintenance requirements for Tents.

TECHNICAL MANUAL }
No. 10-8340-210-23P }

HEADQUARTERS
DEPARTMENT OF THE ARMY
WASHINGTON, D. C., 19 March 1964

TENT, FRAME TYPE, SECTIONAL, M-1948, COTTON DUCK, 9.85 OZ PER SQ YD, BOTH SIDES VINYL RESIN COATED, 16 OZ MAXIMUM WEIGHT PER SQ YD AFTER COATING, FIRE AND MILDEW RESISTANT, FIBERGLASS INSULATED, INSIDE COLOR, LIGHT GREEN, OUTSIDE COLOR, OLIVE DRAB, ARMY SHADE 7, WITH WOOD FLOOR, 16 FT LONG, 16 FT WIDE, CENTER, 9 ft. 2 in. HIGH, 2 END SECTIONS, 2 INTERMEDIATE SECTIONS, COMPONENTS, ARCH AND END PURLINS, ARCHES, COMPLETE FLOOR UNITS, ELECTRICAL OUTLET AND SWITCH ASSEMBLY, END AND ROOF BLANKETS, END AND TOP VESTIBULE COVERS, END AND TOP VESTIBULE PURLINS, GUY BANDS, TENT LINES AND PINS, TIE ANGLE, VESTIBULE FLOOR UNIT, VESTIBULE PANEL AND DOOR, VESTIBULE SIDE PANEL AND WOOD RUNNERS, 70 IN. LONG, 6 in. WIDE, 1 in. THICK, MIL-T-10168 (FSN 8340-262-2399)

Paragraph Page

SECTION I.	INTRODUCTION		
	General	1	ii
	Explanation of Repair Parts, Tool Lists and Prescribed Load Listing (Table I)	2	ii
	Index to Federal Stock Numbers and Manufacturers' Part Numbers	3	v
	Reporting of Equipment Manual Improvements	4	v
	Special Notes	5	v
	Abbreviations	6	v
	Index to Federal Supply Code for Manufacturers	7	v
	Table I, Prescribed Load Listing		v
II.	REPAIR PARTS. LISTS		2
Group 5400.	Tentage		2
Group 5401.	Tent body		2
Group 5403.	Tent support components		9
Group 5404.	Tent anchoring components		15
Group 5405.	Tent accessories		17
Group 5411.	Bulk Materials		18
Group 5412.	Hardware, fastening devices		19
Group 90.	Maintenance supplies		19
Section III.	SPECIAL TOOL LIST		21
	FEDERAL STOCK NUMBER INDEX		22

*This manual supersedes applicable portions of TM 10-616, 1 September 1949, including C 1, 12 February 1951 and C 2, 1 May 1956.

SECTION I

INTRODUCTION

1. General

a. This manual lists repair parts and special tools for organizational and field maintenance. It indicates the quantity of repair parts required to be stocked by organizational maintenance (2nd echelon), as their prescribed load. Repair parts not authorized for stockage but which may be required to perform maintenance of the equipment are listed with no quantities shown. It also indicates the guide quantity factors to be used for initial repair parts stockage by field maintenance (3rd echelon). Information and data contained herein serve as requisitioning reference material and as a guide to determine quantities of repair parts required for stockage.

b. Price information for stock-type repair parts may be obtained from applicable DA SM type-two series supply manuals and/or Supply Management Data and Price List (ML) of the Department of Defense Section of the Federal Supply Catalog.

c. Repair parts lists are arranged as follows:

- (1) Individual parts and major assemblies are listed alphabetically by item name within the numbered functional groups.
- (2) Assembly components and subassemblies are indented and listed alphabetically by item name under major assemblies, (3) Bulk material, hardware and fastening devices are listed in functional groups 5411 and 5412.

2. EXPLANATION OF REPAIR PARTS, TOOL LISTS, AND PRESCRIBED LOAD LISTING (TABLE I)

a. Source Codes. This column is subdivided into four columns. The titles and information provided in each column are as follows:

- (1) Materiel. This column lists the basic materiel code number of the supply service assigned responsibility for the item. Spaces left blank denote supply responsibility of the U. S. Army Mobility Support Center, Columbus, Ohio, except items identified "CD" (U. S. Army Support Command: Richmond, Va.) or "CA" (U. S. Army Support Command, Philadelphia: Pa.) following the nomenclature in the description column. Basic materiel code numbers are:

- 3 - Chemical Materiel
- 5 - Engineer Materiel
- 8 - Medical Materiel
- 9 - Ordnance Materiel
- 11 - Signal Materiel
- 12 - Adjutant General
- 55 - Transportation Materiel

(2) Source. The selection status and source of supply for each part are indicated by one of the following code symbols:

- (a) P - applied to high-mortality repair parts which are stocked in or supplied from the supply service depot system and authorized for use at indicated maintenance echelons.
- (b) P1 - applied to low-mortality repair parts which are stocked in or supplied from supply service depot system and authorized for use at indicated maintenance echelons.
- (c) M - applied to repair parts which are not procured or stocked but are to be manufactured at indicated maintenance echelons.
- (d) A - applied to assemblies which are not procured or stocked as such but are made up of two or more units, each of which carry individual stock numbers and descriptions and are procured and stocked and can be assembled by units at indicated maintenance echelons.
- (e) X - applied to repair parts and assemblies which are not procured or stocked, the mortality of which is normally below that of the applicable end item and the failure of which should result in the retirement of the end item from service.
- (f) X1 - applied to repair parts which are not procured or stocked, the requirement for which will be supplied by use of the next higher assembly or component.
- (g) X2 - applied to repair parts which are not stocked, The indicated maintenance echelon requiring such repair parts will attempt to obtain them through cannibalization; if not obtainable through cannibalization, such repair parts will be requisitioned with supporting justification through normal supply channels.
- (h) C - applied to repair parts authorized for local procurement. If not obtainable from local procurement, such repair parts will be requisitioned through normal supply channels with a supporting statement of non-availability from local procurement.
- (i) Z - applied to obsolete repair parts no longer stocked or procured.

- (3) Maintenance.
- (a) The lowest maintenance echelon authorized to manufacture, assemble and/or install the part is indicated by one of the following code symbols:
- O - Organizational Maintenance (1st and 2nd echelons)
 - F - Field Maintenance (3rd echelon)
- (4) Recoverability. Repair parts and/or tool and equipment items that are recoverable are indicated by one of the following code symbols:
- (a) R - applied to repair parts and assemblies which are economically repairable at field maintenance activities (3rd and 4th echelons) and are normally furnished by supply on an exchange basis.
- (b) T - applied to high-dollar value recoverable repair parts which are subject to special handling and are issued on an exchange basis. Such repair parts are normally repaired or overhauled at depot maintenance activities.
- (c) U - applied to repair parts specifically selected for salvage by reclamation units because of precious metal content, critical materials, high-dollar value reusable casings, castings and the like.

NOTE:

When no code is shown in the recoverability column the part is considered expendable.

b. Federal Stock Numbers. When a Federal Stock Number is available for a part it shall be shown in this column and used for requisitioning purposes.

c. Description.

(1) The item name and a brief description of the part are shown.

(2) A five-digit Federal Supply Code for manufacturers and/or other supply services is shown in parentheses, followed by the manufacturer's part number. This number will be used for requisitioning purposes when no Federal Stock Number is indicated in the Federal Stock Number column.

Example: (08645) 86453

(3) Repair part quantities included in kits, sets and assemblies; that differ from the actual quantity used in this specific end item are listed in parentheses.

(4) When repair parts are coded "C". the manufacturer's part number will be used for local procurement.

d. Unit of Issue. Standard supply term applied to the smallest quantity in which the item is issued, i.e., ea, ft, yd, etc.

e. Quantity Incorporated in Unit. The actual number of parts used in the application indicated is shown in this column. A zero (0) is shown when components of kits or sets are listed that are not applicable to this specific end item.

f. 15-Day Organizational Maintenance Allowance. Shown for each repair part is either a quantity or an asterisk (*) allocation which indicates the following:

(1) A guide quantity factor is shown for each repair part authorized to be stocked by organizational maintenance. This quantity is based on past experience with similar items and the latest mortality data for 16 hours operation per day and is the average quantity required to provide organizational maintenance for the indicated number of items of equipment for a 15 day period under average combat conditions.

NOTE:

Combat essential items which must be stocked or on order at organizational maintenance at all times, regardless of demand, will be identified in the allowance column by a quantity in parentheses.

g. Prescribed Load List. Table I is a Prescribed Load Listing of items quantitatively allocated in this technical manual and lists the combat essential items required to support the end item of equipment. Repair parts required to perform organizational maintenance, which are not authorized for stockage, are identified by an asterisk (*) in "Section II, REPAIR PARTS LISTS", and are to be requisitioned for immediate use only.

(1) The quantities listed in TABLE I are for one prescribed load for a 15 day period. A minimum stockage sufficient to repair one item and/or assembly is authorized (e.g., if 3 belts are required, then 3 belts are allocated as the minimum stockage). This quantity will be indicated in the minimum stockage authorization column. The quantities contained in the prescribed load must be on hand or on order at all times. Units and organizations authorized additional prescribed loads will multiply the number of the prescribed loads by the appropriate end item spread column.

NOTE:

An exception is made for those units and organizations required to have on hand, boxed or packaged prescribed load(s) pursuant to a special mission assignment. Such prescribed load(s) will be computed or selected separately from quantities authorized for stockage at permanent station.

(2) Subsequent changes to allowances will be limited as follows:

- (a) No decrease in the stated quantity of Combat Essential Items is authorized.
- (b) No change in the range of items is authorized. If exception to the Prescribed Load Listing or revision to allowances is considered necessary, a recommendation should be forwarded to the U.S. Army Mobility Support Center, ATTN: SMOMS-MM, P. O. Box 119, Columbus, Ohio, 43216.
- (c) Decreases in the stated quantity of items other than Combat Essential Items are authorized

to a minimum quantity of one and increases in the stated quantity are authorized for all items when justified by demand and usage experience. Detailed procedures for performing these adjustments are prescribed in AR 735-35.

h. Guide Quantity per 100 Equipments. Shown for each repair part applicable to 3rd echelon maintenance is either an allowance factor or an asterisk (*) allocation which indicates the following:

- (1) A guide quantity factor is shown for each repair part authorized to be stocked by field maintenance and supply activities (3rd echelon). This factor is based on the latest mortality data for 16 hours operation per day and is the average quantity required to provide maintenance and supply support for 100 items of equipment for a 15-day period under average combat conditions.
- (2) The quantities of repair parts authorized for stockage are determined by using the following mathematical formula: Quantity of equipment to be supported, multiplied by the listed allowance factor, divided by 100. Fractions derived from the use of the above formula will be rounded to whole numbers as follows: If the result is 1 or more and includes a fraction that is 0.5 or more, the quantity is rounded to the next higher number.

Example: If the number of equipments supported is 30 and the allowance factor for 100 equipments is 5, the following formula would be used:

$$30 \times 5 \div 100 = 1.5$$

The resulting fraction is 1.5:
therefore, the stockage is 2.

If the result is 1 or more and includes the fraction of less than 0.5, the quantity is rounded to the next lower number. If the result is less than 0.5, no quantity is authorized. However, if the item is combat essential, a quantity of 1 is authorized.

Example: If the number of equipments supported is 30 and the allowance factor for 100 equipments is 28, the following formula would be used:

$$30 \times 28 \div 100 = 8.4$$

The resulting fraction is less than 0.5; therefore, the stockage is 8.

- (3) In the guide quantity column for field maintenance, additional repair parts which may be required to perform maintenance, but not authorized for stockage, are listed without a guide quantity factor. These items are identified by an asterisk (*) and are to be requisitioned for immediate use only.
 - (4) Combat essential items of a critical nature which must be stocked at field maintenance at all times, regardless of demand, will be identified in the allowance column by inclosing the allowance factor in parentheses. Parts authorized for use but not for initial stockage will be identified with an asterisk (*) in the allowance column.
- i. Field Maintenance 15-Day Level, 3rd Echelon.
- (1) Third echelon. This column lists the initial guide quantity allowance factors of repair parts authorized for initial stockage by Field Maintenance Shops, Field Maintenance Companies, Direct Support and similar TOE units to provide 3rd echelon maintenance for Mobility Command equipment and to provide organizational maintenance repair parts for supported units for a 15-day period. Additional repair parts are allocated by an asterisk (*) for immediate use only. Upon establishment of supply records, recorded demand experience will be used to compute stockage objectives on authorized repair parts. Review of stockage objectives will be performed in the time cycle prescribed by Major Commanders. Repair parts allocated for immediate use only may be stocked when demand experience indicates a stockage of at least one.
 - (2) Units with TOE capability of performing partial or complete field maintenance for organic Mobility Command equipment. Units with TOE capability of performing partial or complete field maintenance for organic Mobility Command equipment will be authorized to stock 3rd echelon repair parts only when specific agreements are made between the Commander of the designated Parts Supply Activity, normally Direct Support Units (DSU) and using unit. Parts so furnished are in addition to the prescribed load and will be adjusted as demands indicate.

(3) Units with TOE mission to provide maintenance for Mobility Command equipment of supported units. Units organized under TOE's with the assigned mission to provide field maintenance for Mobility Command equipment of supported units are authorized to stock 3rd echelon repair parts. Those repair parts will be issued from the appropriate parts supply activity (Parts Depot and/or DSU). Such stockage is in addition to the prescribed load and will be adjusted as demands indicate.

- csk ---- countersunk
- ctd ---- coated
- Fed ---- Federal
- fin ---- finish
- fl ---- flat
- FSN ---- Federal Stock Number
- ft ---- foot(feet)
- gal ---- gallon(s)
- galv ---- galvanized
- Gp ---- Group
- hd ---- head
- id ---- inside diameter
- in. ----inch(es)
- int ---- internal
- lb ---- pound(s)
- lg ---- long(length)
- med ---- medium
- MIL ---- Military
- NC ---- American National Coarse Thread
- NF ---- American National Fine Thread
- no. ---- number(s)
- o/a ---- overall
- oz ---- ounce(s)
- pkg ---- package(s)
- pt ---- pint(s)
- rd ---- round
- rl ---- roll
- S ---- steel
- sh ---- sheet(s)
- sp ---- single pole
- spec ---- specification(s)
- sq ---- square
- thk ---- thick(ness)
- tu ---- tube(s)
- u/o ---- used on
- v ---- volt(s)
- w ---- watt(s)
- w ---- wide(width)
- w/ ---- with
- w/o ---- without
- yd ---- yard(s)
- zn ---- zinc

j. Illustrations. This column is subdivided into two columns:

- (1) Figure Number. Indicates the number of illustrations in which the part is shown.
- (2) Item Number. Indicates the reference number used to point out the part in the illustration.

3. INDEX TO FEDERAL STOCK NUMBERS AND MANUFACTURERS' PART NUMBERS.

a. Federal Stock Numbers are listed in numerical sequence in the back of this manual in the Federal Stock Number Index.

4. REPORTING OF EQUIPMENT MANUAL IMPROVEMENTS.

The direct reporting of errors, omissions, and recommendations for improving this equipment manual by the individual user, is authorized and encouraged. DA form 2028 will be used for reporting these improvements.

This form may be completed using pencil, pen or typewriter. The original and one copy will be forwarded direct to the Commander, Defense Clothing & Textile Supply Center, ATTN: Directorate of Technical Operations, DCTSC-TFCTM, 2800 South 20th Street, Philadelphia, Pa., 19101. One information copy will be provided to the individual's immediate supervisor (e.g., officer, noncommissioned officer, supervisor, etc.).

5. SPECIAL NOTES.

Replacement of individual items comprised in a kit will be submitted to the Materiel Service assigned Logistic Responsibility for the respective items.

6. ABBREVIATIONS.

- AR ---- As Required
- AWG ---- American Wire Gage
- ba ---- ball
- br ---- brass
- cd ---- cadmium
- cn ---- can(s)
- c/o ---- consist(s) of

7. INDEX TO FEDERAL SUPPLY CODE FOR MANUFACTURERS'

- 00452 General Electric Distributing Corp
- 03348 General Electric Co, Ltd
- 15235 Crouse Hinds Co
- 81337 Quartermaster Corp
- 84093 American Mfg Co
- 87541 Stanley Hardware Co

TABLE I

PRESCRIBED LOAD LISTING

FEDERAL STOCK NUMBER	DESCRIPTION	FUNCTIONAL GROUP	MINIMUM STOCK AUTHORIZED	UNIT OF ISSUE	15 days organizational MAINTENANCE ALLOWANCE	
					1-10	11-25
8340-252-2270	LINE, TENT	5404	10	ea	6.	6.
8340-261-9748	PIN, TENT	5404	24	ea	20.	20.

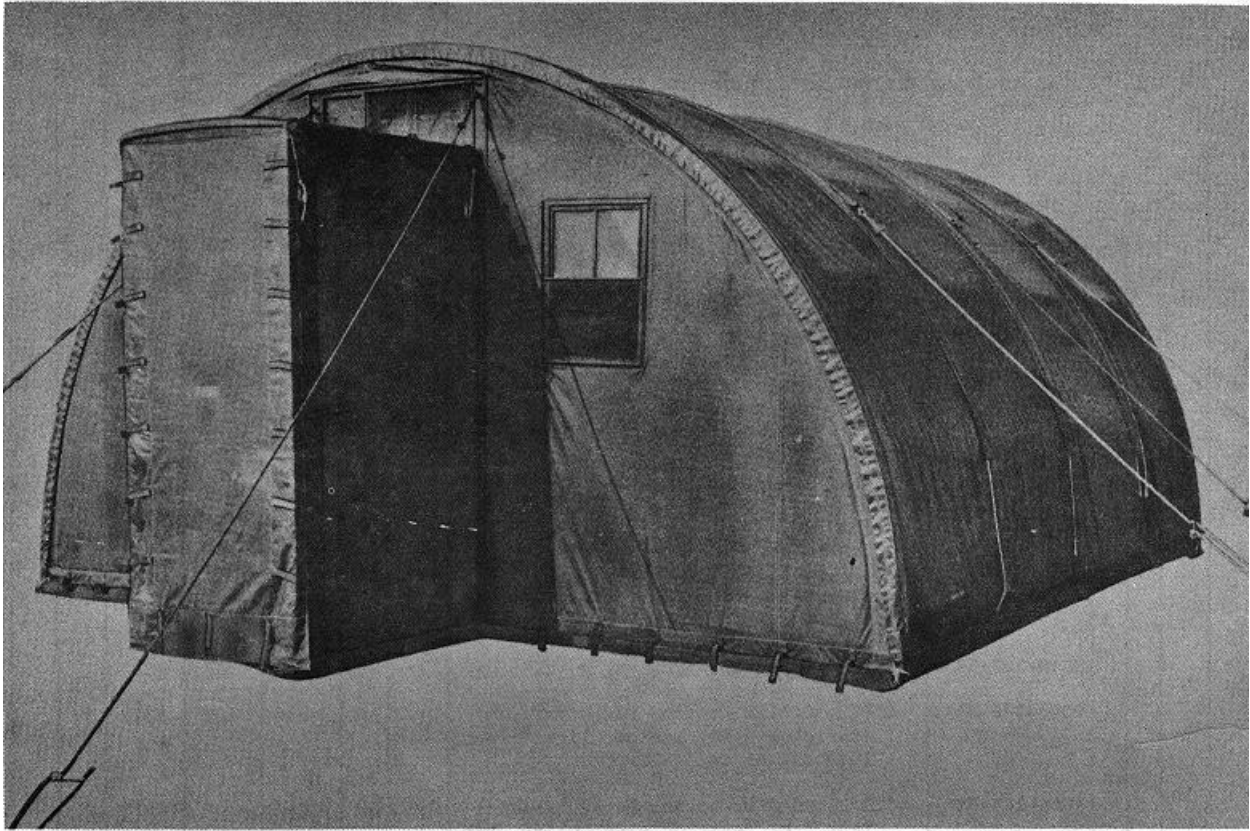


Figure 1. Tent, frame type, sectional.

SMR CODE				FEDERAL STOCK NUMBER	DESCRIPTION REF NUMBER & MFR CODE	USABLE ON CODE	UNIT OF ISSUE	QTY INC IN UNIT	15-DAY MAINTENANCE ALLOWANCE			ILLUS-TRATION	
M A T E R I A L	S O U R C E	E L E C T R O N I C S	R E A R T I C L E S						NO. OF EQUIPMENT			FIG NO.	ITEM NO.
									1-10	11-25	100		
									2 ND ECH	3 ECH			
SECTION II REPAIR PARTS LISTS GROUP 54-TENTAGE GROUP 5401-TENT BODY													
	P1			8340-377-6590	BLANKET ASSEMBLY, TENT END (CA)		ea	2	*	*	*		
				5340-543-3924	BUCKLE, tongueless, double bar, steel, 1 in.		ea	12	see	GP	5412		
				5340-182-1380	BUCKLE, slide, w/hook, S		ea	24	see	GP	5412		
				4010-221-0738	CHAIN, WELDED, twist link, S, galv		ft	AR	see	GP	5411		
	P1	F		8340-182-0954	CHANNEL, locking, vestibule side and door panel (CA)		ea	4			*		
9	C	F		5310-208-2298	NUT, PLAIN, WING, S, cd or zn ctd, 3/8 in. 16 NC-2B		ea	16			*		
9	C	F		5310-044-6212	WASHER, FLAT, S, med, cd or zn ctd, 3/8 in.		ea	16			*		
	M	F			CHAPE, cotton, arch tie down, 1 in. w (fabricate from FSN 5340-543-3924, Buckle, FSN 5340-297-6833, Clip and FSN 8305-263-2477, Webbing)		ea	12				2	4
	M	F			CHAPE, cotton, tie down hook, 1 in. w (fabricate from FSN 5340-297-6833, Clip and FSN 8305-263-2477, Webbing)		ea	24					
				5340-297-6833	CLIP, END, BALL TYPE, br, 1 in,		ea	36	see	GP	5412		
				8305-248-9574	CLOTH, COATED, cotton duck, basic fabric of tent, inside, light green, 14.5 oz, 51 in, w		yd	AR	see	GP	5411		
				8305-248-9575	CLOTH, COATED, cotton duck, basic fabric of tent, outside, olive drab, 14.5 oz, 61 in. W		yd	AR	see	GP	5411		
	P1	F		8340-030-1434	DOOR FRAME AND DOOR ASSEMBLY, TENT, w/stove pipe outlet and hinged transom, plywood door, fiberglass insulated and latch type fastener (CA)		ea	2			*	2	2
9	P	O		5306-182-0883	BOLT, EYE, guy line, S, 3/8 in. 16 by 3 1/4 in.		ea	4	*	*	*		
9	C	O		5310-208-2298	NUT, PLAIN, WING, S, cd or zn ctd, 3/8 in. 16 NC-2B		ea	4	*	*	*		
9	C	O		5310-044-6212	WASHER, FLAT, S, med, cd or zn ctd, 3/8 in.		ea	4	*	*	*		

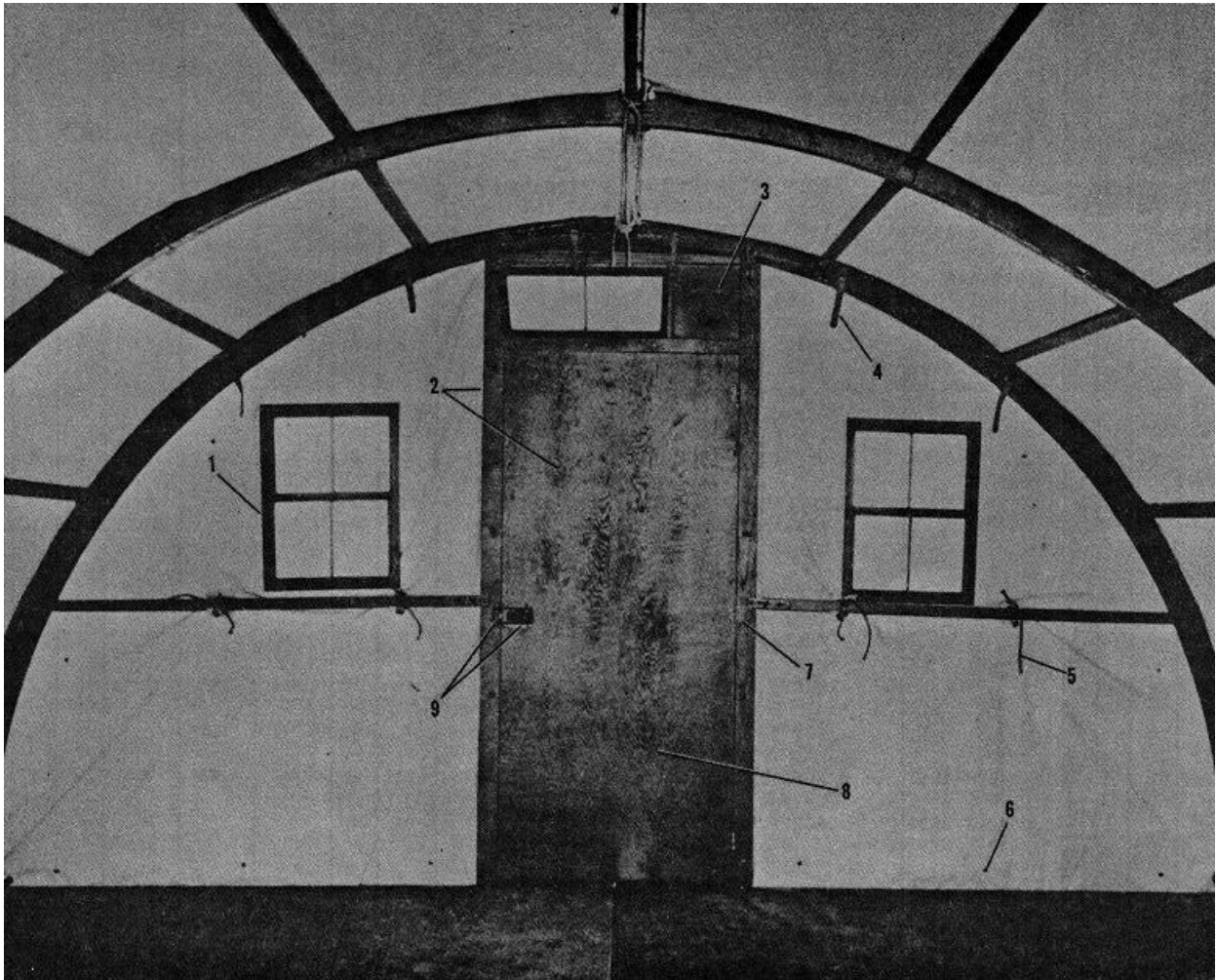


Figure 2. End blanket assembly, inside view.

SMR CODE				FEDERAL STOCK NUMBER	DESCRIPTION	USABLE ON CODE	UNIT OF ISSUE	QTY INC IN UNIT	15-DAY MAINTENANCE ALLOWANCE			ILLUS-TRATION	
M A T E R I E L	S O U R C E	E L E M E N T	R E A C T I V E - Y						NO. OF EQUIPMENT			FIG NO.	ITEM NO.
									1-10	11-25	100		
									2 ND ECH	3 ECH			
	P1	F		8340-182-0440	CLIP, B, tent pin footstop, steel	(CA)	ea	4			1.		
9	C	F		5320-754-4479	RIVET, SOLID, button-hd, S, 1/4 in. by 2 1/8 in.		ea	4			*		
9	C	F		5320-010-6905	RIVET, SOLID, truss hd, S, 1/4 in. by 1 3/8 in.		ea	4			*		
	P1	O		8340-182-6262	CLIP, purlin, steel	(CA)	ea	2	*	*	*		
9	C	O		5305-265-4501	SCREW, WOOD, rd-hd, slotted, S, no. 10 by 1 in.		ea	4	*	*	*		
	P1	O		8340-182-7413	CONNECTOR, adjustable, door frame	(CA)	ea	4	*	*	.4		
9	C	O		5306-801-1973	BOLT, SQUARE NECK, button-hd, S, 3/8 in. 16 NC-2A by 2 in.		ea	4	*	*	*		
9	C	O		5310-208-2298	NUT, PLAIN, WING, S, cd or zn ctd, 3/8 in. 16 NC-2B		ea	4	*	*	*		
9	C	O		5310-044-6212	WASHER, FLAT, S, med, Cd or zn ctd, 3/8 in.		ea	4	*	*	*		
	P1	O		8340-220-6519	COVER, stovepipe opening	(CA)	ea	2	*	*	*	2	3
9	C	O		5305-940-4122	SCREW, TAPPING, THREAD CUTTING, pan-hd, slotted, S, cd or zn ctd, no. 4-40 by 1/4 in.		ea	8	*	*	*		
	P1	O		8340-377-6594	DOOR, TENT	(CA)	ea	2	*	*	*	2	8
	M	F			FLAP, BLACKOUT, cotton, transom (fabricate from FSN 8305-248-9575, Cloth)		ea	2					
	M	F	O		FOOTSTOP, door frame, 15 in. lg (cut from FSN 4010-221-0738, Chain)		ea	4	*	*			
	M	F	O		GASKET, cotton, tent door bottom, 4 1/2 in. by 32 1/2 in. (cut from FSN 8305-248-9575, Cloth)		ea	2	*	*			
9	P1	O		5340-229-4243	HINGE, BUTT, tent door, S, 2 1/2 in. by 2 1/2 in.		ea	6	*	*	*	2	7
9	C	O		5305-012-9536	SCREW, WOOD, fl-hd, slotted, S, cd or zn ctd, no. 8 by 1 in.		ea	36	*	*	*		
9	P1	O		5340-229-4241	HINGE, transom, 1 3/4 in. by 1 7/16 in.		ea	4	*	*	.4		
9	C	O		5305-012-9351	SCREW, WOOD, fl-hd, slotted, S, Cd or zn ctd, no. 8 by 3/4 in.		ea	16	*	*	*		
	P1	O		8340-220-6520	KEEPER, TRANSOM	(CA)	ea	2	*	*	.2		
9	C	O		5305-012-9351	SCREW, WOOD, fl-hd, slotted, S, cd or zn ctd, No. 8 by 3/4 in,		ea	4	*	*	*		
	C	O			LATCH, w/keeper and screws, tent door	(87541) 1240	ea	2	*	*	*	2	9
	P1	O		8340-182-9315	PLATE, stovepipe opening	(CA)	ea	2	*	*	.2		
	M	F			SCREEN, transom, br, 11 1/2 in. by 21 1/4 in. (cut from FSN 5335-228-9750, Wire fabric)		ea	2					
	C	O			SCREW, EYE, transom latching, S, galv	(87541) 8450-108	ea	2	*	*	.2		

SMR CODE				FEDERAL STOCK NUMBER	DESCRIPTION	USABLE ON CODE	UNIT OF ISSUE	QTY INC IN UNIT	15-DAY MAINTENANCE ALLOWANCE			ILLUS-TRATION		
M A T E R I E L	S O U R C E	E C H E L O N	R E A C T I V E - Y						NO. OF EQUIPMENT			FIG NO.	ITEM NO.	
									1-10	11-25	100			
									2 ND ECH	3 ECH				
9	P1	O		8340-183-4165	STRAP, hinged, transom latching, steel (CA)		ea	2	*	*	.2			
	C	O		5305-012-9351	SCREW, WOOD, fl-hd, slotted, S, cd or zn ctd, No. 8 by 3/4 in.		ea	4	*	*	*			
	P1	O		8340-183-4166	THRESHOLD, tent door (CA)		ea	2	*	*	*			
	M	F			TIE TAPE, cotton, transom blackout flap, 3/4 in. w, 24 in. lg (cut from FSN 8315-253-6289, Tape)		ea	4						
	P	F		8340-359-2552	WINDOW PANE, TENT, transom, plastic, wire reinforced, 9 7/8 in. w, 23 1/2 in. lg (CA)		ea	2	*	*	1.			
	M	F			FLAP, BLACKOUT; cotton, window (fabricate from FSN 8305-248-9575, Cloth)		ea	4						
	M	F			TIE TAPE, cotton, window blackout flap, 3/4 in. w, 12 in. ig (cut from 8315-253-6289, Tape)		ea	8						
					5325-641-0293	GROMMET, METALLIC, air vent, br, no. 1		ea	20	see	GP	5412	2	6
					5325-641-0405	GROMMET, METALLIC, securing lug, br, no. 4		ea	16	see	GP	5412		
	M	F				LINE, polyester, blanket securing, 1/4 in. dia, 33 ft 4 in. lg (cut from FSN 4020-719-4609, Rope)		ea	2					
	P	O			8340-252-2291	LINE, TENT, manila, blanket securing lug, one end sewed, 1/4 in. dia, 3 ft 4 in. lg (CA)		ea	8	*	*	1.	2	5
	M	F				LUG, cotton, blanket securing, 4 in. by 5 1/2 in. (fabricate from FSN 8305-248-9574, Cloth and FSN 5325-641-0405, Grommet)		ea	8					
					4020-719-4609	ROPE, POLYESTER FIBER, natural., 1/4 in. dia		ft	AR	see	GP	5411		
					8315-253-6289	TAPE, TEXTILE, cotton, olive drab, 3/4 in. w		yd	AR	see	GP	5411		
					8310-988-1300	THREAD, POLYESTER, olive drab, ticket No. F		tu	AR	see	GP	5411		
					8310-988-1301	THREAD, POLYESTER, olive drab, ticket No. FF		tu	AR	see	GP	5411		
	M	F				TIE TAPE, cotton, 3/4 in. w (cut from FSN 8315-253-6289, Tape; u/o the following applications) 8 - Window blackout flap, tie down, 12 in. lg 8 - Window blackout flap, tie up, 24 in. lg		ea	16					
				8305-263-2477	WEBBING, TEXTILE, cotton, olive drab, 1 in. w		yd	AR	see	GP	5411			

SMR CODE				FEDERAL STOCK NUMBER	DESCRIPTION	USABLE ON CODE	UNIT OF ISSUE	QTY INC IN UNIT	15-DAY MAINTENANCE ALLOWANCE			ILLUS-TRATION			
M A T E R I A L	S O U R C E	E C H E L O N	R E A C T I V I T Y						NO. OF EQUIPMENT			FIG NO.	ITEM NO.		
									1-10	11-25	100				
									2 ND ECH	3 ECH					
P1	F			8340-183-4168	WINDOW ASSEMBLY, complete HOOK AND EYE, DOOR, window sash, 1 in. lg	(CA)	ea	4			*		2	1	
						(87541) 8440	ea	4	*	*	*				
	M	F			SCREEN, tent window, br, 14 1/4 in. by 20 1/4 in. (cut from FSN 5335-228-9750, Wire fabric)		ea	4							
	P	F		8340-218-1174	WINDOW PANE, TENT, plastic, wire reinforced, 12 in. lg, 18 in. w	(CA)	ea	8			*				
	P1	O		5335-228-9750	WIRE FABRIC, br, 18 by 14 mesh		rl	AR	see	GP	5411				
				8340-377-6591	BLANKET ASSEMBLY, TENT ROOF	(CA)	ea	4	*	*	.4				
				5340-182-1380	BUCKLE, slide, w/hook, S		ea	32	see	GP	5412				
	M	F			CHAPE, cotton, tie down hook, 1 in. w (fabricate from FSN 5340-297-6833, Clip and FSN 8305-263-2477, Webbing)		ea	32							
				5340-297-6833	CLIP, END, BALL TYPE, br, 1 in.		ea	32	see	GP	5412				
				8305-248-9574	CLOTH, COATED, cotton duck, basic fabric of tent, inside, light green, 14.5 oz, 51 in. w		yd	AR	see	GP	5411				
				8305-248-9575	CLOTH, COATED, cotton duck, basic fabric of tent, outside, olive drab, 14.5 oz, 61 in. w		yd	AR	see	GP	5411				
				5325-641-0293	GROMMET, METALLIC, air vent, br, No. 1		ea	48	see	GP	5412				
				5325-641-0405	GROMMET, METALLIC, securing lug, br, No. 4		ea	16	see	GP	5412				
	M	F			LINE, polyester, blanket securing, 1/4 in. dia, 33 ft 4 in. lg (cut from FSN 4020-719-4609, Rope)		ea	8							
	P	O		8340-252-2291	LINE, TENT, manila, blanket securing lug, one end sewed, 1/4 in. dia, 3 ft 4 in. lg	(CA)	ea	8	*	*	1.				
	M	F			LUG, cotton, blanket securing, 4 in. by 5 1/2 in. (fabricate from FSN 8305-248-9574, Cloth and FSN 5325-641-0405, Grommet)		ea	8							
				4020-719-4609	ROPE, POLYESTER FIBER, natural, 1/4 in. dia		ft	AR	see	GP	5411				
				8310-988-1300	THREAD, POLYESTER, olive drab, ticket No. F		tu	AR	see	GP	5411				
				8310-988-1301	THREAD, POLYESTER, olive drab, ticket No. FF		tu	AR	see	GP	5411				
				8305-263-2477	WEBBING, TEXTILE, cotton, olive drab, 1 in. w		yd	AR	see	GP	5411				

SMR CODE				FEDERAL STOCK NUMBER	DESCRIPTION	USABLE ON CODE	UNIT OF ISSUE	QTY INC IN UNIT	15-DAY MAINTENANCE ALLOWANCE			ILLUS-TRATION	
M A T E R I E L	S O U R C E	E R I O N	R E A C T I V E - Y						NO. OF EQUIPMENT			FIG NO.	ITEM NO.
									1-10	11-25	100		
									2 ND ECH	3 ECH			
	P1	O		8340-182-9300	COVER, end, vestibule	(CA)	ea	1	*	*	*		
				5340-182-1380	BUCKLE, slide, w/hook, chape A, steel		ea	19	see	GP	5412		
	M	F			CHAPE, A, cotton, tie down, 1 in. w (fabricate from FSN 5340-297-6833, Clip and FSN 8305-263-2477, Webbing)		ea	19					
				5340-297-6833	CLIP, END, BALL TYPE, br, 1 in.		ea	19	see	GP	5412		
				8305-248-9575	CLOTH, COATED, cotton duck, basic fabric of vestibule, olive drab, 14.5 oz, 61 in. w		yd	AR	see	GP	5411		
				5325-641-0405	GROMMET, METALLIC, securing lug, br, No. 4		ea	2	see	GP	5412		
	P	O		8340-252-2291	LINE, TENT, manila, securing lug, one end sewed, 1/4 in. dia, 3 ft 4 in.		ea	1	*	*	*		
					lg	(CA)	ea	1					
	M	F			LUG, cotton, cover securing, 4 in. by 5 1/2 in. (fabricate from PSN 8305-248-9575, Cloth and FSN 5325-641-0405, Grommet)		ea	1					
	X2	F			RETAINER A, vestibule end cover assembly	(81337) 5-4-187	ea	1			*		
	P1	O		8340-182-6262	CLIP, purlin, steel	(CA)	ea	1	*	*	*		
9	C	O		5305-265-4501	SCREW, WOOD, rd-hd, slotted, S, no. 10 by 1 in.		ea	2	*	*	*		
	P	F		8340-377-6601	GUSSET, TENT VESTIBULE	(CA)	ea	2			4		
9	C	F		5320-584-9167	RIVET, SOLID, csk-hd, S, 1/4 in. by 1 3/4 in.		ea	6			*		
	P1	O		8340-183-4164	STRIP, binding, vestibule end cover, steel, 1/8 in. thk, 1 in. w, 36 in. lg	(CA)	ea	1	*	*	*		
9	C	O		5305-012-0617	SCREW, WOOD, rd-hd, slotted, S, cd or zn ctd, No. 8 by 3/4 in.		ea	8	*	*	*		
				8310-988-1300	THREAD, POLYESTER, olive drab, ticket No. F		tu	AR	see	GP	5411		
				8310-988-1301	THREAD, POLYESTER, olive drab, ticket No. FF		tu	AR	see	GP	5411		
				8305-263-2477	WEBBING, TEXTILE, cotton, olive drab, 1 in. w		yd	AR	see	GP	5411		
	P1	O		8340-220-6518	COVER, top, vestibule	(CA)	ea	1	*	*	*		
				5340-182-1380	BUCKLE, slide, w/hook, chape A, steel		ea	8	see	GP	5412		
	M	F			CHAPE, A, cotton, tie down, 1 in. w (fabricate from FSN 5340-297-6833, Clip and FSN 8305-263-2477, Webbing)		ea	8					
				5340-297-6833	CLIP, END, BALL TYPE, br, 1 in.		ea	8	see	GP	5412		

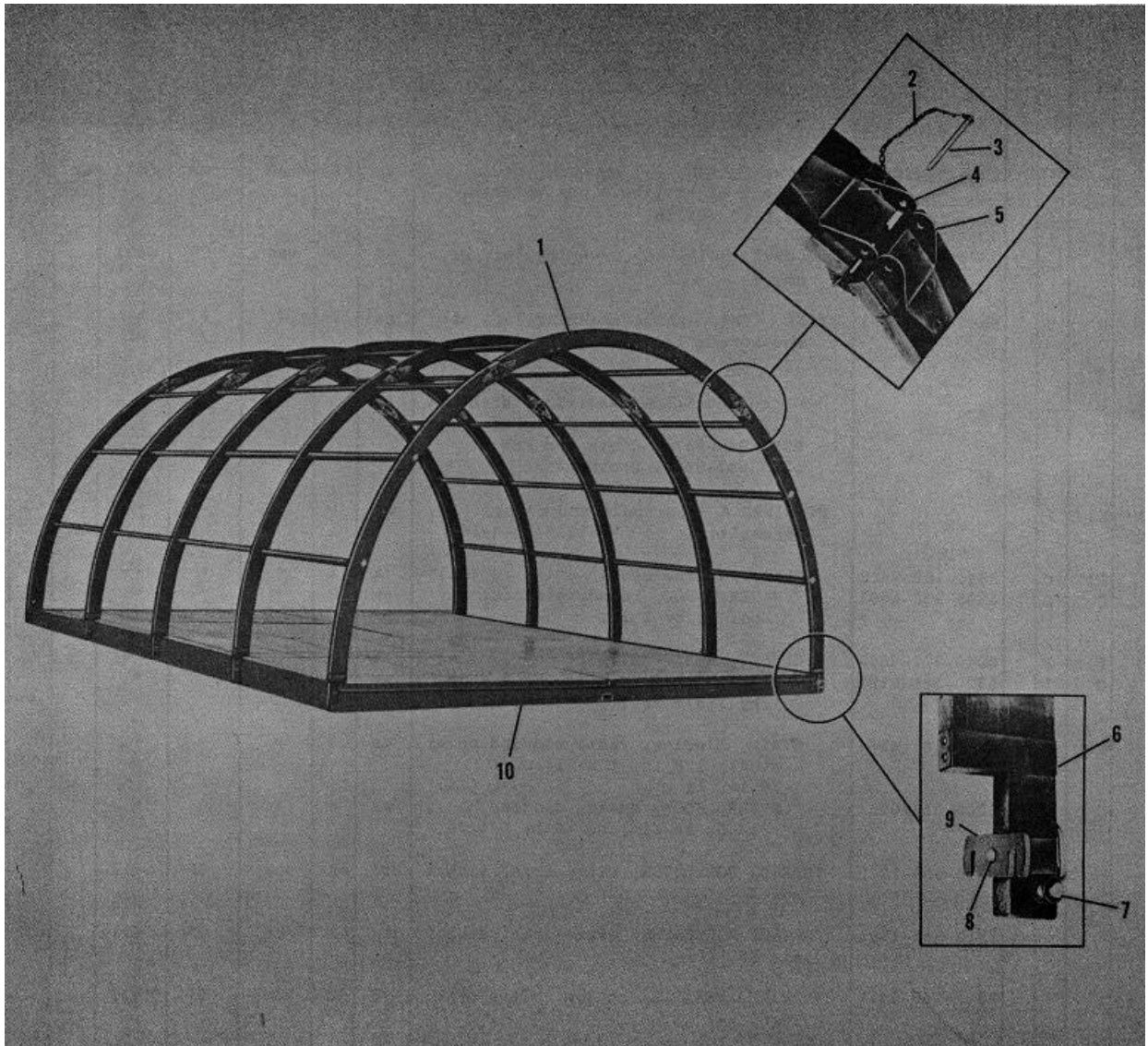


Figure 3. Frame assembly.

SMR CODE				FEDERAL STOCK NUMBER	DESCRIPTION	USABLE ON CODE	UNIT OF ISSUE	QTY INC IN UNIT	15-DAY MAINTENANCE ALLOWANCE			ILLUS-TRATION		
M A T E R I E L	S O U R C E	E R R O R	R E A S O N						NO. OF EQUIPMENT			FIG NO.	ITEM NO.	
									1-10	11-25	100			
									2 ND ECH	3 ECH				
				8305-248-9575	CLOTH, COATED, cotton duck, basic fabric of vestibule, olive drab, 14.5 oz, 61 in. w		yd	AR	see	GP	5411			
	M	F			LINE, polyester, securing, 1/4 in. dia, 9 ft lg (cut from FSN 4020-719-4609, Rope)		ea	2						
			P	O	8340-252-2291	LINE, TENT, manila, securing lug, one end sewed, 1/4 in. dia, 3 ft 4 in. lg		ea	1	*	*	*		
					4020-719-4609	ROPE, POLYESTER FIBER, natural, 1/4 in. dia	(CA)	ft	AR	see	GP	5411		
					8310-988-1300	THREAD, POLYESTER, olive drab, ticket No. F		tu	AR	see	GP	5411		
					8310-988-1301	THREAD, POLYESTER, olive drab, ticket No. FF		tu	AR	see	GP	5411		
					8305-263-2477	WEBBING, TEXTILE, cotton, olive drab, 1 in. w		yd	AR	see	GP	5411		
					GROUP 5403-TENT SUPPORT COMPONENTS									
	P	O			8340-182-0436	ARCH, complete	(CA)	ea	5	*	*	(.5)	3	1
9			C	O	5306-801-1973	BOLT, SQUARE NECK, button-hd, S, end purlin and door frame adjustable connector, 3/8 in. 16 NC-2A by 2 in.		ea	20	*	*	*		
					5310-208-2298	NUT, PLAIN, WING, S, cd or zn ctd, 3/8 in. 16 NC-2B		ea	20	*	*	*		
			P	O	8340-377-6592	CHAIN, leaf connector pin, safety, steel, No. 1, 6 in. lg	(CA)	ea	20	*	*	*	3	2
					5315-017-7923	PIN, COTTER, S, cd or zn ctd, 1/8 in. by 3/4 in.		ea	40	*	*	*		
					4010-221-0738	CHAIN, WELDED, twist link, S, galv		ft	AR	see	GP	5411		
	P	F			8340-182-2003	CLIP, arch, steel	(CA)	ea	10			1.	3	9
			C	F		RIVET, SOLID, csk-hd, S, 5/16 in. by 3 in.		ea	10			*	3	8
			P	F	8340-182-0437	CLIP, A, tent pin footstop, steel	(CA)	ea	10			*		
					5305-265-4501	SCREW, WOOD, rd-hd, slotted, S, no. 10 by 1 in.		ea	10			*		
	P	F			8340-182-6262	CLIP, purlin, steel	(CA)	ea	90			10.		
			C	F	5320-010-4090	RIVET, SOLID, truss-hd, S, 1/4 in. by 1 5/8 in.		ea	90			*		
			P	O	8340-182-7198	COLLAR, lacing ferrule, steel, 9/16 in. dia, 3/4 in. lg	(CA)	ea	20	*	*	*		
					5310-019-3228	NUT, PLAIN, HEXAGON, S, cd or zn ctd, 3/8 in. 16 NC-2B		ea	10	*	*	*		
					5305-206-0030	SCREW, CAP, HEXAGON HEAD, S, cd or zn ctd, 3/8 in. 16 NC-2A by 3 1/2 in.		ea	10	*	*	*	3	7
					5310-044-6212	WASHER, FLAT, S, med, cd or zn ctd, 3/8 in.		ea	40	*	*	*		

SMR CODE				FEDERAL STOCK NUMBER	DESCRIPTION	USABLE ON CODE	UNIT OF ISSUE	QTY INC IN UNIT	15-DAY MAINTENANCE ALLOWANCE			ILLUS-TRATION	
M A T E R I E L	S O U R C E	E L E M E N T	R E A C T I V E - Y						NO. OF EQUIPMENT			FIG NO.	ITEM NO.
									1-10	11-25	100		
									2 ND ECH	3 ECH			
	P1	F		8340-359-2541	FERRULE, TENT ARCH FRAME SECTION, steel, type A, 1 1/4 in. w, 1 1/2 in. high, 2 1/2 in. lg (CA)		ea	10			*		
	P1	F		8340-359-2542	FERRULE, TENT ARCH FRAME SECTION, steel, type B, 1 1/4 in. w, 1 1/2 in. high, 5 in. lg (CA)		ea	10			*	3	6
9	C	F		5305-265-4501	SCREW, WOOD, rd-hd, slotted, S, No. 10 by 1 in.		ea	40			*		
	P1	F		8340-359-2543	FERRULE, TENT ARCH FRAME SECTION, steel, type C, 1 1/4 in. w, 2 in. high, 5 in. lg (CA)		ea	20			*		
	MF	O			FOOTSTOP, 15 in. lg (cut from FSN 4010-221-0738, Chain)		ea	10	*	*			
	P1	F		8340-182-9306	LEAF, connector A, steel (CA)		ea	20			2.	3	4
	P1	F		8340-182-9310	LEAF, connector B, steel (CA)		ea	20			2.	3	5
9	C	F		5320-010-4091	RIVET, SOLID, truss-hd, S, 1/4 in. by 1 3/4 in.		ea	200			*		
9	P	O		5315-528-4515	PIN, STRAIGHT, HEADED, rd-hd, steel, leaf connector A and B, 5/16 in. by 4 1/2 in. lg (drill 2 holes for 1/8 in. dia cotter pin)		ea	20	*	*	4.	3	3
9	C	O		5315-017-7923	PIN, COTTER, S, cd or zn ctd, 1/8 in. by 3/4 in.		ea	20	*	*	*		
	P	O		8340-377-6607	FLOOR RUNNER, TENT, wood, 13/16 in. thk, 5 5/8 in. w, 70 in. lg (CA)		ea	16	*	*	20.		
	P1	O		8340-377-6600	FLOOR, TENT VESTIBULE (CA)		ea	1	*	*	*		
	P1	F		8340-184-9522	FASTENER, roto-lock, complete, vestibule floor (CA)		ea	2			*		
9	C	F		5306-576-6990	BOLT, SQUARE NECK, button-hd, S, 1/4 in. 20 NC-2A by 1 1/2 in.		ea	8			*		
9	C	F		5310-176-8164	NUT, PLAIN, HEXAGON, S8, cd or zn ctd, 1/4 in. 20 NC-2B		ea	8			*		
	M	F			PANEL, FLOOR, 1/2 in. thk, 35 7/8 in. w., 46 1/4 in. lg (cut from FSN 5530-129-2154, Plywood)		ea	1					
				5530-129-2154	PLYWOOD, SOFTWOOD, exterior, 5 ply, 1/2 in. thk, 48 in. w, 96 in. lg		sh	AR	see	GP	5411		
	P1	O		8340-377-6596	FLOOR UNIT, TENT, complete (CA)		ea	8	*	*	*	3	10
9	P1	O		5306-184-9521	BOLT, "T" HEAD, floor unit to arch clip, steel, 3/8 in. 16 by 1 1/4 in.		ea	16	*	*	1.6		
9	C	O		5310-208-2298	NUT, PLAIN, WING, S, cd or zn ctd, 3/8 in. 16 NC-2B.		ea	16	*	*	*		
	P	O		8340-377-6593	CHAIN, floor unit locking hook, safety, steel, No. 1, 12 in. lg (CA)		ea	8	*	*	*		
9	C	O		5315-017-7923	PIN, COTTER, S, cd or zn ctd, 1/8 in. by 3/4 in. *		ea	8*	4	*			
	P1	O		8340-182-8057	CORNER SUPPORT, floor (CA)		ea	16	*	*	*		
9	C	O		5305-265-4546	SCREW, WOOD, rd-hd, slotted, S, No. 10 by 2 in.		ea	48	*	*	*		

SMR CODE				FEDERAL STOCK NUMBER	DESCRIPTION	USABLE ON CODE	UNIT OF ISSUE	QTY INC IN UNIT	15-DAY MAINTENANCE ALLOWANCE			ILLUS-TRATION	
M A T E R I A L	S O U R C E	E R R O R	R E A S O N						NO. OF EQUIPMENT			FIG NO.	ITEM NO.
									1-10	11-25	100		
									2 ND ECH	3 ECH			
	P1	F		8340-184-9522	FASTENER, roto-lock, complete, tent floor (CA)		ea	16			*		
9	C	F		5306-576-6990	BOLT, SQUARE NECK, button-hd, S, 1/4 in. 20 NC-2A by 1 1/2 in.		ea	64			*		
9	C	F		5310-176-8164	NUT, PLAIN, HEXAGON, S, cd or zn ctd, 1/4 in. 20 NC-2B		ea	64			*		
				5325-286-9554	FASTENER, SNAP, floor unit locking key retainer		ea	8	see	GP	5412		
	P1	O		8340-182-9305	HOOK, TENT, w/chain and cotter pin, locking, floor unit, .375 thk, 4 in. w, 2 1/4 in. lg, 1/8 in. dia hole drilled in center top of hook (CA)		ea	8	*	*	.8		
	M	F			PANEL, FLOOR, bottom, 1/4 in. thk, 43 7/16 in. w, 7 ft 9 3/4 in. lg (cut from FSN 5530-129-2097, Plywood)		ea	8					
	M	F			PANEL, FLOOR, top, 3/8 in. thk, 46 3/4 in. W, 8 ft lg (cut from FSN 5530-129-2125, Plywood)		ea	8					
				5530-129-2097	PLYWOOD, SOFTWOOD, exterior, 3 ply, 1/4 in. thk, 48 in. w, 96 in. lg		sh	AR	see	GP	5411		
				5530-129-2125	PLYWOOD, SOFTWOOD, exterior, 3 ply, 3/8 in. thk, 48 in. w, 96 in. lg		sh	AR	see	GP	5411		
	M	F			RETAINER, fastener key, 8 in. lg (fabricate from FSN 5325-286-9554, Fastener, snap, and FSN 8315-253-6290, Tape)		ea	8					
	P1	O		8340-183-4160	SOCKET, door post, S (CA)		ea	16	*	*	*		
	P1	O		8340-183-4161	SOCKET, locking, floor unit, S (CA)		ea	16	*	*	2.		
9	C	O		5305-012-9642	SCREW, WOOD, fl-hd, slotted, S, cd or zn ctd, No. 10 by 2 in.		ea	80	*	*	*		
				5325-281-3991	STUD, SNAP FASTENER, floor unit locking key retainer		ea	8	see	GP	5412		
				8315-253-6290	TAPE, TEXTILE, cotton, olive drab, 1 in. w		yd	AR	see	GP	5411		
	P1	O		8340-377-6604	PANEL AND DOOR ASSEMBLY, TENT VESTIBULE (CA)		ea	1	*	*	*		
	P1	F		8340-182-0502	ANGLE, steel, panel and door (CA)		ea	1			*		
9	C	F		5320-010-4091	RIVET, SOLID, button-hd, S, 1/4 in, by 1 3/4 in.		ea	1			*		
9	C	F		5320-010-6899	RIVET, SOLID, truss-hd, S, 1/4 in. by 5/8 in.		ea	8			*		
9	P1	O		5340-262-4120	CLEAT, ROPE, cover securing line, 4 1/2 in.		ea	2	*	*	*		
9	C	O		5305-249-2665	SCREW, WOOD, fl-hd, S, No. 6 by 1/2 in.		ea	4	*	*	*		

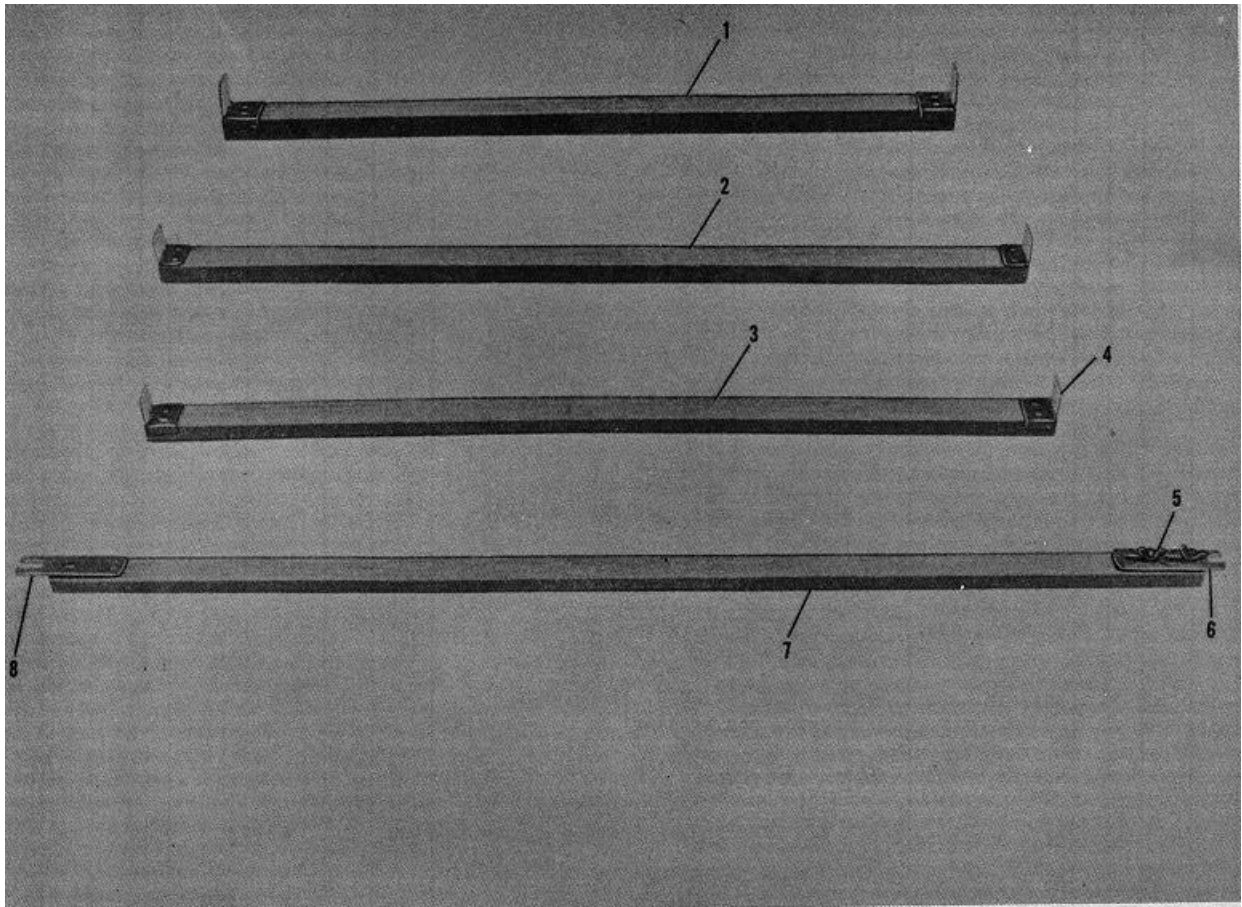


Figure 4. Purlins.

SMR CODE				FEDERAL STOCK NUMBER	DESCRIPTION	USABLE ON CODE	UNIT OF ISSUE	QTY INC IN UNIT	15-DAY MAINTENANCE ALLOWANCE			ILLUS-TRATION	
M A T E R I A L	S O U R C E	E R A C T I O N	R E A C T I O N						NO. OF EQUIPMENT			FIG NO.	ITEM NO.
									1-10	11-25	100		
									2 ND ECH		3 ECH		
	P1	F		8340-182-7196	CLIP, vestibule panel and door purlin (CA)		ea	1			*		
9	C	F		5320-010-4092	RIVET, SOLID, truss-hd, S, 1/4 in. by 2 in.		ea	2			*		
	P1	F		8340-182-7415	CONNECTOR, gusset, w/bolts and wing nuts (CA)		ea	1			.2		
9	C	F		5306-019-1845	BOLT, MACHINE, sq-hd, S, cd or zn ctd, 3/8 in. 16 NC-2A by 1 in.		ea	2			*		
9	C	F		5310-208-2298	NUT, PLAIN, WING, S, cd or zn ctd, 3/8 in. 16 NC-2B		ea	2			*		
9	C	F		5320-010-4092	RIVET, SOLID, button-hd, S, 1/4 in. by 2 in.		ea	3			*		
9	P1	O		5340-229-4243	HINGE, BUTT, vestibule door, S, 2 1/2 in. by 2 1/2 in.		ea	3	*	*	*		
9	C	O		5305-012-9536	SCREW, WOOD, fl-hd, slotted, S, cd or. zn ctd, No. 8 by 1 in.		ea	18	*	*	*		
	C	O			LATCH, w/keeper and screws, vestibule door (87541) 1240 (CA)		ea	1	*	*	*		
	P1	O		8340-183-4167	THRESHOLD, vestibule (CA)		ea	1	*	*	*		
9	C	O		5310-019-3228	NUT, PLAIN, HEXAGON, S, cd or zn ctd, 3/8 in. 16 NC-2B		ea	2	*	*	*		
9	C	O		5305-018-0132	SCREW, CAP, HEXAGON HEAD, S, cd or zn ctd, 3/8 in. 16 NC-2A by 2 1/4 in.		ea	2	*	*	*		
9	C	O		5310-044-6212	WASHER, FLAT, S, med, cd or zn ctd, 3/8 in.		ea	2	*	*	*		
	P	O		8340-183-0097	PURLIN, end, tent, 63 5/8 in. lg (CA)		ea	4	*	*	*	4	7
	P1	O		8340-182-7413	CONNECTOR, adjustable, S (CA)		ea	4	*	*	*	4	6
9	C	O		5306-801-1973	BOLT, SQUARE NECK, button-hd, S, 3/8 in. 16 NC-2A by 2 in.		ea	8	*	*	*		
9	C	O		5310-208-2298	NUT, PLAIN, WING, S, cd or zn ctd, 3/8 in. 16 NC-2B		ea	8	*	*	*	4	5
	P1	F		8340-182-7414	CONNECTOR, fixed, S (CA)		ea	4			*	4	8
9	C	F		5320-010-6905	RIVET, SOLID, truss-hd, S, 1/4 in. by 1 3/8 in.		ea	8			*		
	P	O		8340-182-9320	PURLIN, end, vestibule, wood, 33 3/8 in. lg (CA)		ea	1	*	*	.1	4	1
	P	O		8340-359-2554	PURLIN, TENT ARCH, wood, 1 1/8 in. thk, 1 5/8 in. w, 46 3/4 in. lg (CA)		ea	36	*	*	4.	4	3
	P	O		8340-182-9316	PURLIN, top, vestibule, wood, 42 in. lg (CA)		ea	1	*	*	.1	4	2
	P1	F		8340-182-0441	ANGLE, purlin, S (CA)		ea	76			10.	4	4
9	C	F		5320-010-6905	RIVET, SOLID, truss-hd, S, 1/4 in. by 1 3/8 in.		ea	152			*		
	P	O		8340-377-6605	SIDE PANEL ASSEMBLY, TENT VESTIBULE (CA)		ea	1	*	*	*		
	P1	F		8340-182-0502	ANGLE, side panel, S (CA)		ea	1			*		
9	C	F		5320-010-4091	RIVET, SOLID, button-hd, S, 1/4 in. by 1 3/4 in.		ea	1			*		
9	C	F		5320-010-6899	RIVET, SOLID, truss-hd, S, 1/4 in. by 5/8 in.		ea	8			*		

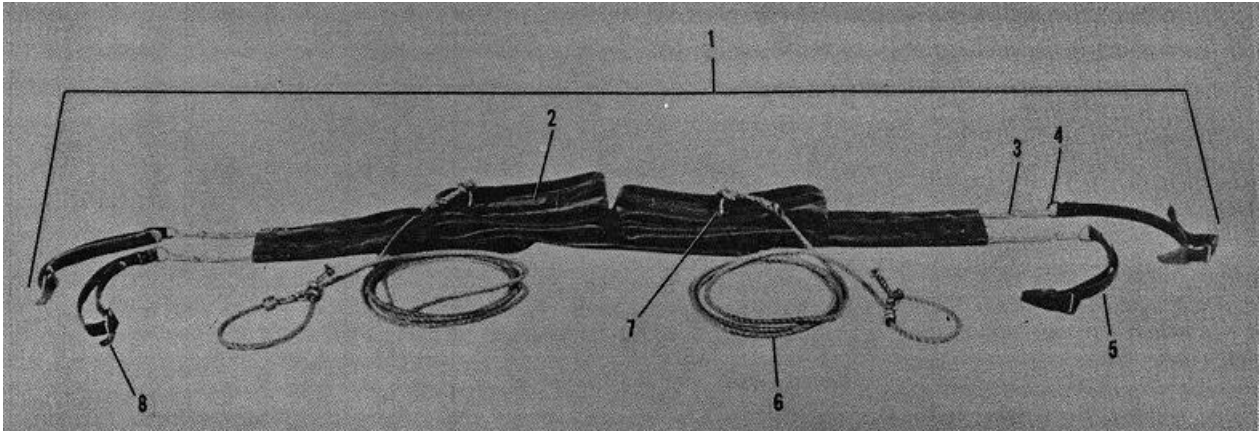


Figure 5. Guyband assembly.

SMR CODE				FEDERAL STOCK NUMBER	DESCRIPTION	USABLE ON CODE	UNIT OF ISSUE	QTY INC IN UNIT	15-DAY MAINTENANCE ALLOWANCE			ILLUS-TRATION		
M A T E R I E L	S O U R C E	E C H E L O N	R E A C T I V E - Y						NO. OF EQUIPMENT			FIG NO.	ITEM NO.	
									1-10	11-25	100			
									2 ND ECH	3 ECH				
	P1	O		8340-182-0435	ANGLE, tie, side panel and panel door assembly (CA)		ea	1	*	*	*			
9	C	O		5306-012-6696	BOLT, SQUARE NECK, button-hd, S, cd or zn ctd, 3/8 in. 16 NC-2A by 2 1/2 in.		ea	2	*	*	*			
9	C	O		5310-208-2298	NUT, PLAIN, WING, S, cd or zn ctd, 3/8 in. 16 NC-2B		ea	2	*	*	*			
9	P1	O		5340-262-4120	CLEAT, ROPE, cover securing line, 4 1/2 in.		ea	2	*	*	*			
9	C	O		5305-249-2665	SCREW, WOOD, fl-hd, S, No. 6 by 1/2 in.		ea	4	*	*	*			
	P1	F		8340-182-7196	CLIP, vestibule side panel purlin (CA)		ea	1			*			
9	C	F		5320-010-4092	RIVET, SOLID, truss-hd, S, 1/4 in. by 2 in.		ea	2			*			
	P	F		8340-182-7415	CONNECTOR, gusset, w/bolts and wing nuts (CA)		ea	1			*			
9	C	F		5306-019-1845	BOLT, MACHINE, sq-hd, S, cd or zn ctd, 3/8 in. 16 NC-2A by 1 in.		ea	2			*			
9	C	F		5310-208-2298	NUT, PLAIN, WING, S, cd or zn Ctd, 3/8 in. 16 NC-2B		ea	2			*			
9	C	F		5320-010-4092	RIVET, SOLID, button-hd, S, 1/4 in. by 2 in.		ea	3			*			
					GROUP 5404-TENT ANCHORING COMPONENTS									
	P	O		8340-030-1433	GUYBAND ASSEMBLY, TENT ROOF (CA)		ea	3	*	*	(1.5)	5	1	
	M	F		5340-182-1380	BUCKLE, slide, w/hook, S		ea	12	see	GP	5412	5	8	
					CHAPE, cotton, dee ring, 1 1/2 in. w (fabricate from FSN 5340-260-1419, Ring, dee and FSN 8305-263-2479, Webbing)		ea	6				5	2	
				5340-297-6833	CLIP, END, BALL TYPE, tie down strap, brass, 1 in.		ea	12	see	GP	5412			
				8305-248-9575	CLOTH, COATED, cotton duck, basic fabric of guyband assembly, olive drab, 14.5 oz, 61 in. w		yd	AR	see	GP	5411			
	M	F			LINE, polyester, roof guyband securing, 1/4 in. dia, 24 ft lg (cut from FSN 4020-719-4609, Rope)		ea	6				5	3	
				5340-260-1415	RING, DEE, guyband tie down strap, br, 1 in. by .875 in.		ea	12	see	GP	5412	5	4	
				5340-260-1419	RING, DEE, guy line chape, br, 1 1/2 in. by 1 1/2 in.		ea	6	see	GP	5412	5	7	
	M	F		4020-719-4609	ROPE, POLYESTER FIBER, 1/4 in. dia STRAP, cotton, tie down hook, 1 in, w (fabricate from FSN 5340-297-6833, Clip, FSN 5340-260-1415, Ring, dee and FSN 8305-263-2477, Webbing)		ft ea	AR 12	see	GP	5411	5	5	

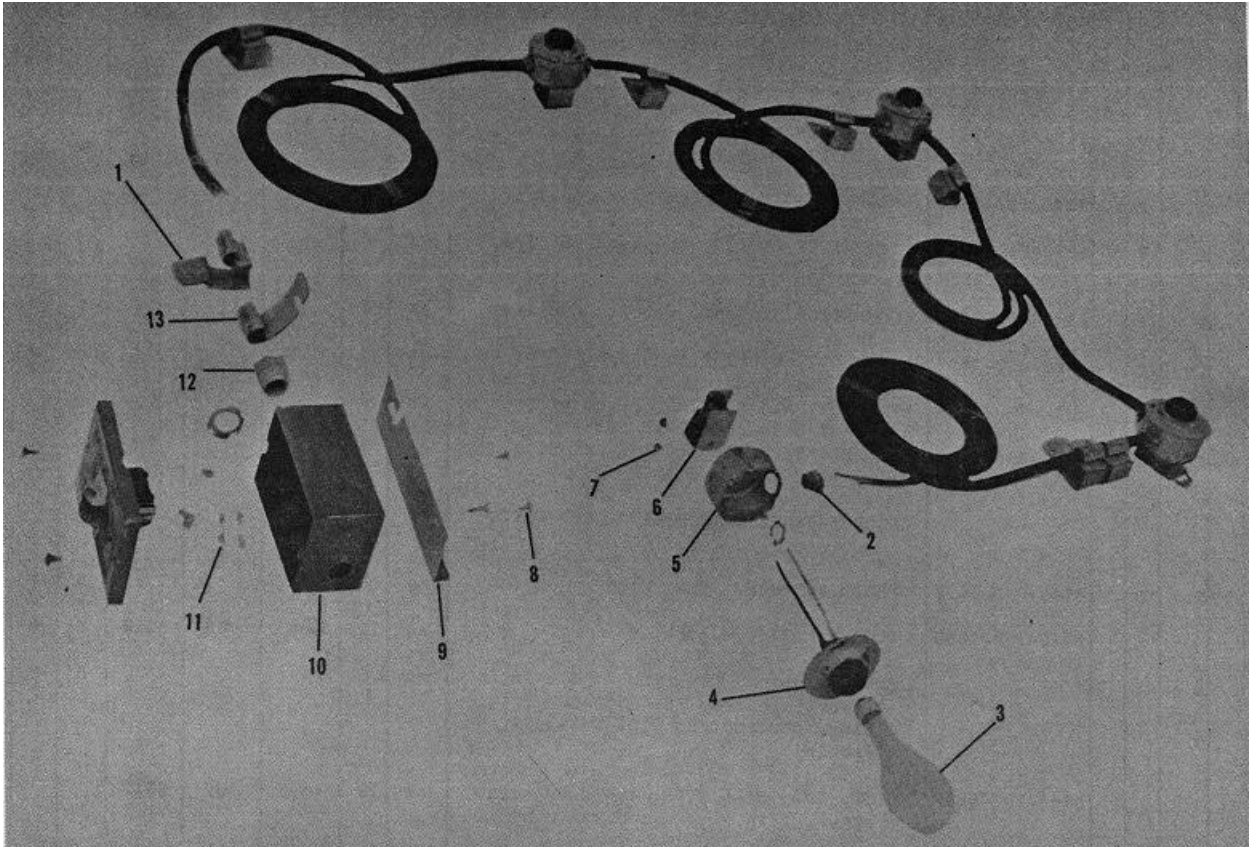


Figure 6. Lighting unit assembly.

SMR CODE				FEDERAL STOCK NUMBER	DESCRIPTION	USABLE ON CODE	UNIT OF ISSUE	QTY INC IN UNIT	15-DAY MAINTENANCE ALLOWANCE			ILLUS-TRATION		
M A T E R I A L	S O U R C E	E R R O R	R E A C T I V E						NO. OF EQUIPMENT			FIG NO.	ITEM NO.	
									1-10	11-25	100			
									2 ND ECH	3 ECH				
REF NUMBER & MFR CODE														
				8305-263-2477	WEBBING, TEXTILE, cotton, olive drab, 1 in. w		yd	AR	see	GP	5411			
				8305-263-2479	WEBBING, TEXTILE, cotton, olive drab, 1 1/2 in. w		yd	AR	see	GP	5411			
	P	O		8340-252-2270	LINE, TENT, manila, guy line, twisted, 3 strands, one end w/eye, one end sewed, 3/8 in. dia, 15 ft lg, type XXIV, class A, MIL Spec L-1709	(CA)	ea	10	6.	6.	13.	5	6	
	P	O		8340-261-9748	PIN, TENT, steel, 12 in. lg, type II, MIL Spec P-501	(CA)	ea	24	20.	20.	32.			
	P	O		8340-205-2759	SLIP, TENT LINE, magnesium, 3 1/4 in. lg, type II, MIL Spec S-1734	(CA)	ea	10	*	*	*			
				5340-297-6581	SNAP HOOK, end guy line, bronze, 1 1/4 in.		ea	4	see	GP	5412			
				GROUP 5405-TENT ACCESSORIES										
	P1	O		8340-508-0600	CONNECTOR-SWITCH, complete	(CA)	ea	1	*	*	*			
11	P1	F		5935-970-1231	CONNECTOR, ELECTRICAL, junction box, non-watertight	(00452) SP3301V	ea	8			*	6	2	
		C	F		CONNECTOR, ELECTRICAL, switch box, watertight	(15235) CGB194	ea	1			*	6	12	
	P1	F		8340-182-1494	BRACKET, switch, S	(CA)	ea	1			*	6	9	
9		C	F	5310-012-0614	NUT, PLAIN, HEXAGON, S, cd or zn ctd, No. 10-32 NF-2B		ea	3			*	6	11	
9		C	F	5305-013-3624	SCREW, MACHINE, fl-hd, slotted, S, cd or zn ctd, No. 10-32 NF-2A by 3/8 in.		ea	3			*	6	8	
9		C	F	5310-527-3288	WASHER, LOCK, toothed, int-tooth, S, cd or zn ctd, No. 10		ea	3			*			
				6145-283-9475	CABLE, POWER, ELECTRICAL, rubber, 3 conductor, 14 AWG, 600v		ft	AR	see	GP	5411			
	P1	O		8340-182-1999	CLIP, cord, S	(CA)	ea	1	*	*	*	6	1	
	M	F			CORD, electrical, lighting unit (cut from FSN 6145-283-9475, Cable)		ea	AR						
	P1	O		8340-182-9303	HANGER, cord, spring steel	(CA)	ea	7	*	*	*	6	13	
	P1	F		8340-182-9302	HANGER, outlet, spring steel	(CA)	ea	4			*	6	6	
9		C	F	5320-826-9363	RIVET, SOLID, fl-hd, S, 3/16 in. by 1/4 in.		ea	8			*	6	7	
11	P1	F		5975-296-5091	JUNCTION BOX, w/o cover, type 1, size A, style 3		ea	4			*	6	5	
		C	F		PLATE, w/socket, junction box (03348) 601		ea	4			*	6	4	

SMR CODE				FEDERAL STOCK NUMBER	DESCRIPTION	USABLE ON CODE	UNIT OF ISSUE	QTY INC IN UNIT	15-DAY MAINTENANCE ALLOWANCE			ILLUS-TRATION	
M A T E R I A L	S O U R C E	E L E C T R O N	R E A C T I V E						NO. OF EQUIPMENT			FIG NO.	ITEM NO.
									1-10	11-25	100		
									2 ND ECH		3 ECH		
	C	F			SWITCH BOX, multibreaker, 120v, ap, type M01 (Square D catalog no. 161101)		ea	1			*	6	10
5	P1	O		6240-246-5052	LAMP INCANDESCENT, lighting unit, rough service, 100w, 120v (24446) 100A21RS (79500) 100ARS120 GROUP 5411-BULK MATERIALS		ea	4	*	*	*	6	3
11	P1	F		6145-283-9475	CABLE, POWER, ELECTRICAL, rubber, 3 conductor, 14 AWG, 600v		ft	AR			*		
55	P1	F		4010-221-0738	CHAIN, WELDED, twist link, steel, galv, 25 links per ft, 620 lb breaking strength, type I, grade C, class 5, style 2, Fed Spec RR-C-271		ft	AR			*		
	P	F		8305-248-9574	CLOTH, COATED, cotton duck, 14.5 oz, light green, fire and mildew resistant, 51 in. w, type II, class 1, MIL Spec C-10799 (CA)		yd	AR			10.		
	P	F		8305-248-9575	CLOTH, COATED, cotton duck, 14.5 oz, olive drab, Army shade No. 7, fire and mildew resistant, 61 in. w, type II, class 1, MIL Spec C-10799 (CA)		yd	AR			10.		
5	P	F		5530-129-2097	PLYWOOD, SOFTWOOD, exterior, sanded 2 sides, 3 ply, 1/4 in. thk, 48 in. w, 96 in. lg, Fed Spec NN-P-530		sh	AR			10.		
5	P	F		5530-129-2125	PLYWOOD, SOFTWOOD, exterior, sanded 2 sides, 3 ply, 3/8 in. thk, 48 in. w, 96 in. lg, Fed Spec NN-P-530		sh	AR			10.		
5	P	F		5530-129-2154	PLYWOOD, SOFTWOOD, exterior, sanded 2 sides, 5 ply, 1/2 in. thk, 48 in. w, 96 in. lg, Fed Spec NN-P-530		sh	AR			10.		
55	P	F		4020-719-4609	ROPE, POLYESTER FIBER, natural, 1/4 in. dia (84093) 1-4TYPE51-600FT		ft	AR			2.		
	P	F		8315-253-6289	TAPE, TEXTILE, cotton, plain weave, olive drab, Army shade No. 7, mildew resistant, water repellent, 3/4 in. w, 80 to 100 yds lg, 100 lb breaking strength, type I, class 4, MIL Spec W-530 (CA)		yd	AR			5.		
	P	F		8315-253-6290	TAPE, TEXTILE, cotton, plain weave, olive drab, Army shade No. 7, mildew resistant, water repellent, 1 in. w, 80 to 100 yds lg, 130 lb breaking strength, type I, class 4, MIL Spec W-530 (CA)		yd	AR			.8		
	P	F		8310-988-1300	THREAD, POLYESTER, olive drab, Army shade No. 7, ticket No. F. 4 plies, 4200 yds per tube, type I, class 1, Fed Spec V-T-285 (CA)		tu	AR			*		

SMR CODE				FEDERAL STOCK NUMBER	DESCRIPTION	USABLE ON CODE	UNIT OF ISSUE	QTY INC IN UNIT	15-DAY MAINTENANCE ALLOWANCE			ILLUS-TRATION	
M A T E R I E L	S O U R C E	E R I O N	R E A C T I V E - Y						NO. OF EQUIPMENT			FIG NO.	ITEM NO.
									1-10	11-25	100		
									2 ND ECH		3 ECH		
	P	F		8310-988-1301	THREAD, POLYESTER, olive drab, Army shade No. 7, ticket No. FF, 3 plies, 2600 yds per tube, type I, class 1, Fed Spec V-T-285 (CA)		tu	AR			*		
	P	F		8305-263-2477	WEBBING, TEXTILE, cotton, olive drab, Army shade No. 7, mildew resistant, water repellent, 1 in. w, 550 lb breaking strength, type III, class 4, MIL Spec W-530 (CA)		yd	AR			*		
	P	F		8305-263-2479	WEBBING, TEXTILE, cotton, olive drab, Army shade No. 7, mildew resistant, water repellent, 1 1/2 in. w, 860 lb breaking strength, type III, class 4, MIL Spec W-530 (CA)		yd	AR			*		
9	P	F		5335-228-9750	WIRE FABRIC, br, 18 by 14 mesh, type II, Fed Spec RR-S-141 GROUP 5412-HARDWARE, FASTENING DEVICES		rl	AR			*		
9	P1	O		5340-182-1380	BUCKLE, slide, w/hook, S		ea	95	*	*		9.5	
9	P1	F		5340-543-3924	BUCKLE, tongueless, double bar, S, black enamel fin, 1 in., type II, class 3, MIL Spec B-543B		ea	12				1.2	
9	P	O		5340-297-6833	CLIP, END, BALL TYPE, br, black chemical fin, 1 in., MIL Spec C-496		ea	107	*	*		10.	
9	P1	F		5325-286-9554	FASTENER, SNAP, br, black chemical fin (c/o socket and plate)		ea	8				4.	
9	P	F		5325-641-0405	GROMMET, METALLIC, br, black chemical fin, No. 4		ea	34				5.	
9	P	F		5325-641-0293	GROMMET, METALLIC, br, black enamel fin, No. 1		ea	68				10.	
9	P	F		5340-260-1415	RING, DEE, br, 1 in. by .875 in.		ea	12				1.2	
9	P	F		5340-260-1419	RING, DEE, br, 1 1/2 in. by 1 1/2 in.		ea	6				.6	
9	P	O		5340-297-6581	SNAP HOOK, sliding bolt type, bronze, 4 7/8 in. o/a		ea	4	*	*		12.	
9	P1	F		5325-281-3991	STUD, SNAP FASTENER, S, dull black enamel fin, style 1 GROUP 90-MAINTENANCE SUPPLIES		ea	8				4.	
5	P	O		8010-297-2124	ENAMEL, semi-gloss, olive drab, shade X24087, type II, Fed Spec TT-E-485, 1 gal cn		gal	AR	*	*	*		
5	P	O		8010-161-7425	PRIMER COATING, red or brown iron oxide, Fed Spec TT-P-636, 1 gal cn		gal	AR	*	*	*		

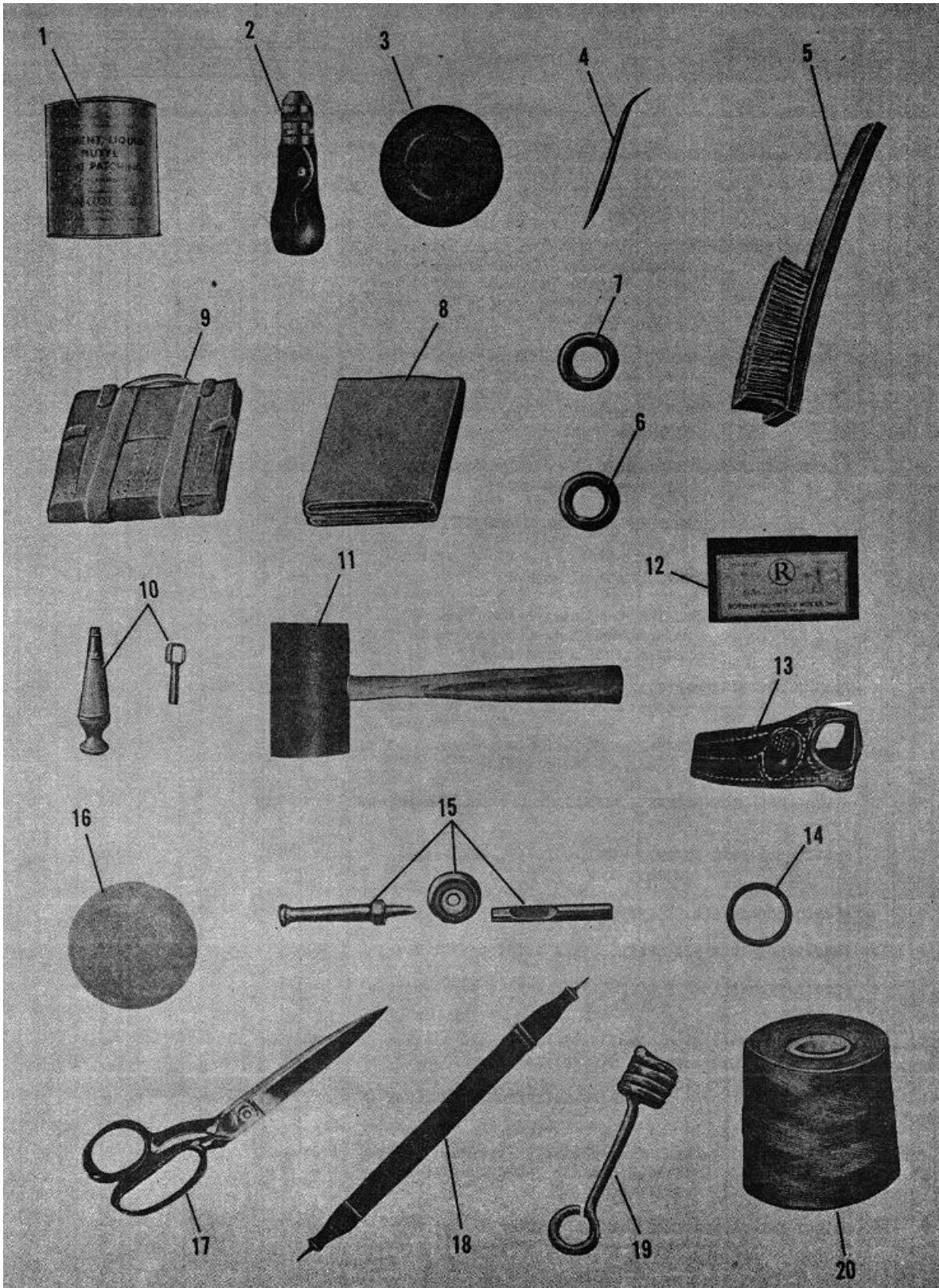


Figure 7. Repair kit, tentage.

SMR CODE				FEDERAL STOCK NUMBER	DESCRIPTION	USABLE ON CODE	UNIT OF ISSUE	QTY INC IN UNIT	15-DAY MAINTENANCE ALLOWANCE			ILLUS-TRATION	
M A T E R I E L	S O U R C E	E C H E L O N	R E A C B O I V L E I R T - Y						NO. OF EQUIPMENT			FIG NO.	ITEM NO.
									1-10	11-25	100		
									2 ND ECH		3 ECH		
				5120-540-3120	SECTION III SPECIAL TOOL LIST KEY, SOCKET HEAD SCREW, hex type, L-type handle, 5/16 in. by 6 in. by 6 in. (CD)		ea	9					
	P1	O		8340-262-5767	REPAIR KIT, TENTAGE (CA)		ea	1					
5				8040-266-0850	6 cn - ADHESIVE, 1 pt cn							7	1
				5120-257-5541	1 ea - AWL, SADDLER'S SEWING (CD)							7	2
				9160-253-1173	1 ba - BEESWAX, TECHNICAL (CD)							7	3
				7920-285-2782	1 ea - BRUSH, WIRE, SCRATCH (CD)							7	5
				8340-270-1334	1 ea - CASE, TENTAGE REPAIR KIT (CA)							7	9
9				8305-170-3902	5 yd - CLOTH, DUCK, COTTON (CA)							7	8
9				5325-231-6622	75 ea - GROMMET, METALLIC, No. 4							7	6
				5325-202-2053	75 ea - GROMMET, METALLIC, No. 5							7	7
				5120-299-8430	1 ea - HAFT, SADDLER'S AWL (CD)							7	10
				5120-222-2220	1 ea - MALLET, RAWHIDE (CD)							7	11
				5120-516-4230	1 ea - NEEDLE, SADDLER'S SEWING AWL (CD)							7	4
				8315-163-1547	1 pkg - NEEDLE, SAILMAKER'S (CA)							7	12
				5120-162-7447	1 ea - PALM, SEWING (CD)							7	13
				8340-241-8187	150 ea - PATCH, TENT, 3 in. dia (CA)							7	16
				8340-241-8188	50 ea - PATCH. TENT, 4 3/8 in. dia (CA)								
				8340-241-8189	35 ea - PATCH, TENT, 6 1/4 in. dia (CA)								
				5120-221-1150	1 ea - PUNCH AND DIE, GROMMET INSERTING, No. 4 (CD)							7	15
				5120-221-1151	1 ea - PUNCH AND DIE, GROMMET INSERTING, No. 5 (CD)								
9				5340-264-1221	50 ea - RING, CONNECTING, ROUND, 1/2 in. id							7	14
9				5340-264-1222	25 ea - RING, CONNECTING, ROUND, 3/4 in. id								
9				5340-264-1219	10 ea - RING, CONNECTING, ROUND, 1 in. id								
				5110-161-6918	1 ea - SHEARS, BENT TRIMMERS (CD)							7	17
				8465-269-0682	1 ea - SLING, CARRYING, BAG AND CASE (CA)							7	18
				8340-223-8094	10 ea - SLIP, TENT LINE (CA)							7	19
				8310-988-1301	1 tu - THREAD, POLYESTER (CA)							7	20

FEDERAL STOCK NUMBER INDEX							
FEDERAL STOCK NUMBER	PAGE NO.	FEDERAL STOCK NUMBER	PAGE NO.	FEDERAL STOCK NUMBER	PAGE NO.	FEDERAL STOCK NUMBER	PAGE NO.
4010-221-0738	2	5320-010-4091	10	7920-285-2782	21	8340-182-9302	17
	9		11	8010-161-7425	19	3340-182-9303	17
	18		13	8010-297-2124	19	8340-182-9305	11
4020-719-4609	5	5320-010-4092	13	8040-266-0850	21	8340-182-9306	10
	6		15	8305-170-3902	21	8340-182-9310	10
	9	5320-010-6899	11	8305-248-9574	2	8340-182-9315	4
	15		13		6	8340-182-9316	13
	18	5320-010-6905	4		18	8340-182-9320	13
5110-161-6918	21		13	8305-248-9575	2	8340-183-0097	13
5120-162-7447	21	5320-584-9167	7		6	8340-183-4160	11
5120-221-1150	21	5320-754-4479	4		7	8340-183-4161	11
5120-221-1151	21	5320-826-9363	17		9	8340-183-4164	7
5120-222-2220	21	5325-202-2053	21		15	8340-183-4165	5
5120-257-5541	21	5325-231-6622	21		18	8340-183-4166	5
5120-299-8430	21	5325-281-3991	11	8305-263-2477	5	8340-183-4167	13
5120-516-4230	21		19		6	8340-183-4168	6
5120-540-3120	21	5325-286-9554	11		7	8340-184-9522	10
5305-012-0617	7		19		9		11
5305-012-9351	4	5325-641-0293	5		17	8340-205-2759	17
	5		6		19	8340-218-1174	6
5305-012-9536	4		19	8305-263-2479	17	8340-220-6518	7
	13	5325-641-0405	5		19	8340-220-6519	4
5305-012-9642	11		6	8310-988-1300	5	8340-220-6520	4
5305-013-3624	17		7		6	8340-223-8094	21
5305-018-0132	13		19		7	8340-241-8187	21
5305-206-0030	9	5335-228-9750	6		9	8340-241-8188	21
5305-249-2665	11		19		18	8340-241-8189	21
	15	5340-182-1380	2	8310-988-1301	5	8340-252-2270	17
5305-265-4501	4		6		6	8340-252-2291	5
	7		7		7		6
	9		15		9		7
	10		19		19		9
5305-265-4546	10	5340-229-4241	4		21	8340-261-9748	17
5305-940-4122	4	5340-229-4243	4	8315-163-1547	21	8340-262-5767	21
5306-012-6696	15		13	8315-253-6289	5	8340-270-1334	21
5306-019-1845	13	5340-260-1415	15		18	8340-359-2541	10
	15		19	8315-253-6290	11	8340-359-2542	10
5306-182-0883	2	5340-260-1419	15		18	8340-359-2543	10
5306-184-9521	10		19	8340-030-1433	15	8340-359-2552	5
5306-576-6990	10	5340-262-4120	11	8340-030-1434	2	8340-359-2554	13
	11		15	8340-182-0435	15	8340-377-6590	2
5306-801-1973	4	5340-264-1219	21	8340-182-0436	9	8340-377-6591	6
	9	5340-264-1221	21	8340-182-0437	9	8340-377-6592	9
	13	5340-264-1222	21	8340-182-0440	4	8340-377-6593	10
5310-012-0614	17	5340-297-6581	17	8340-182-0441	13	8340-377-6594	4
5310-019-3228	9		19	8340-182-0502	11	8340-377-6596	10
	13	5340-297-6833	2		13	8340-377-6600	10
5310-044-6212	2		6	8340-182-0954	2	8340-377-6601	7
	4		7	8340-182-1494	17	8340-377-6604	11
	9		15	8340-182-1999	17	8340-377-6605	13
	13		19	8340-182-2003	9	8340-377-6607	10
5310-176-8164	10	5340-543-3924	2	8340-182-6262	4	8340-508-0600	17
	11		19		7	8465-269-0682	21
5310-208-2298	2	5530-129-2097	11		9	9160-253-1173	21
	4		18	8340-182-7196	13		
	9	5530-129-2125	11		15		
	10		18	8340-182-7198	9		
	13	5530-129-2154	10	8340-182-7413	4		
	15		18		13		
5310-527-3288	17	5935-970-1231	17	8340-182-7414	13		
5315-017-7923	9	5975-296-5091	17	8340-182-7415	13		
	10	6145-283-9475	17		15		
5315-528-4515	10		18	8340-182-8057	10		
5320-010-4090	9	6240-246-5052	18	8340-182-9300	7		

By Order of the Secretary of the Army:

EARLE G. WHEELER,
*General, United States Army,
Chief of Staff.*

Official:

J. C. LAMBERT,
*Major General, United States Army,
The Adjutant General.*

Distribution:

Active Army:

USASA (1)
DCSLOG (1)
CNGB (1)
C/Army Res (1)
CofEngrs (6)
CofSpts (1)
CofT (1)
CSigO (1)
USCONARC (2)
USAMC (12)
USAMOCOM (5)
USAWECOM (5)
USAMICOM (5)
USAMUCOM (5)
USAECOM (5)
USATECOM (5)
USASMCOM (6)
ARADCOM (2)
ARADCOM Rgn (2)
OS Maj Comd (3)
LOGCOMD (1)
MDW (1)
Armies (5)

USA Corps (2)
Div (2)
Bde (2)
Regt/Op/BG (2)
Bn (2)
Co/Btry (2)
USMA (1)
Svc Colleges (2)
Br Svc Sch (2) except
 USAQMS (10)
Army Dep (4)
USA Natick Lab (4)
USA Spt Cen (Phila) (10)
USA Mob Spt Cen (36)
USAQMTC (4)
POE (2)
USA Tml Comd (2)
Army Tml (2)
Arsenals (2)
PG (2)
USAOSA (2)
QM Fld Maint Shops (2)
USA Tech Equip Publs Fld Ofc, Ft Lee (2)

NG: None.

USAR: None.

For explanation of abbreviations used, see AR 320-50.

RECOMMENDED CHANGES TO EQUIPMENT TECHNICAL PUBLICATIONS



*THEN...JOT DOWN THE
DOPE ABOUT IT ON THIS FORM.
CAREFULLY TEAR IT OUT, FOLD IT
AND DROP IT IN THE MAIL.*

SOMETHING WRONG WITH PUBLICATION

FROM: (PRINT YOUR UNIT'S COMPLETE ADDRESS)

DATE SENT

PUBLICATION NUMBER

PUBLICATION DATE

PUBLICATION TITLE

BE EXACT PIN-POINT WHERE IT IS

PAGE NO.	PARA-GRAPH	FIGURE NO.	TABLE NO.

IN THIS SPACE, TELL WHAT IS WRONG AND WHAT SHOULD BE DONE ABOUT IT.

PRINTED NAME, GRADE OR TITLE AND TELEPHONE NUMBER

SIGN HERE

The Metric System and Equivalents

Linear Measure

1 centimeter = 10 millimeters = .39 inch
 1 decimeter = 10 centimeters = 3.94 inches
 1 meter = 10 decimeters = 39.37 inches
 1 dekameter = 10 meters = 32.8 feet
 1 hectometer = 10 dekameters = 328.08 feet
 1 kilometer = 10 hectometers = 3,280.8 feet

Weights

1 centigram = 10 milligrams = .15 grain
 1 decigram = 10 centigrams = 1.54 grains
 1 gram = 10 decigrams = .035 ounce
 1 decagram = 10 grams = .35 ounce
 1 hectogram = 10 decagrams = 3.52 ounces
 1 kilogram = 10 hectograms = 2.2 pounds
 1 quintal = 100 kilograms = 220.46 pounds
 1 metric ton = 10 quintals = 1.1 short tons

Liquid Measure

1 centiliter = 10 milliliters = .34 fl. ounce
 1 deciliter = 10 centiliters = 3.38 fl. ounces
 1 liter = 10 deciliters = 33.81 fl. ounces
 1 dekaliter = 10 liters = 2.64 gallons
 1 hectoliter = 10 dekaliters = 26.42 gallons
 1 kiloliter = 10 hectoliters = 264.18 gallons

Square Measure

1 sq. centimeter = 100 sq. millimeters = .155 sq. inch
 1 sq. decimeter = 100 sq. centimeters = 15.5 sq. inches
 1 sq. meter (centare) = 100 sq. decimeters = 10.76 sq. feet
 1 sq. dekameter (are) = 100 sq. meters = 1,076.4 sq. feet
 1 sq. hectometer (hectare) = 100 sq. dekameters = 2.47 acres
 1 sq. kilometer = 100 sq. hectometers = .386 sq. mile

Cubic Measure

1 cu. centimeter = 1000 cu. millimeters = .06 cu. inch
 1 cu. decimeter = 1000 cu. centimeters = 61.02 cu. inches
 1 cu. meter = 1000 cu. decimeters = 35.31 cu. feet

Approximate Conversion Factors

<i>To change</i>	<i>To</i>	<i>Multiply by</i>	<i>To change</i>	<i>To</i>	<i>Multiply by</i>
inches	centimeters	2.540	ounce-inches	Newton-meters	.007062
feet	meters	.305	centimeters	inches	.394
yards	meters	.914	meters	feet	3.280
miles	kilometers	1.609	meters	yards	1.094
square inches	square centimeters	6.451	kilometers	miles	.621
square feet	square meters	.093	square centimeters	square inches	.155
square yards	square meters	.836	square meters	square feet	10.764
square miles	square kilometers	2.590	square meters	square yards	1.196
acres	square hectometers	.405	square kilometers	square miles	.386
cubic feet	cubic meters	.028	square hectometers	acres	2.471
cubic yards	cubic meters	.765	cubic meters	cubic feet	35.315
fluid ounces	milliliters	29.573	cubic meters	cubic yards	1.308
pints	liters	.473	milliliters	fluid ounces	.034
quarts	liters	.946	liters	pints	2.113
gallons	liters	3.785	liters	quarts	1.057
ounces	grams	28.349	liters	gallons	.264
pounds	kilograms	.454	grams	ounces	.035
short tons	metric tons	.907	kilograms	pounds	2.205
pound-feet	Newton-meters	1.356	metric tons	short tons	1.102
pound-inches	Newton-meters	.11296			

Temperature (Exact)

°F	Fahrenheit temperature	5/9 (after subtracting 32)	Celsius temperature	°C
----	------------------------	----------------------------	---------------------	----

TM 10-8340-210-23P Tent, Frame Type, Sectional, M-1948-1964

PIN: 0028457-000